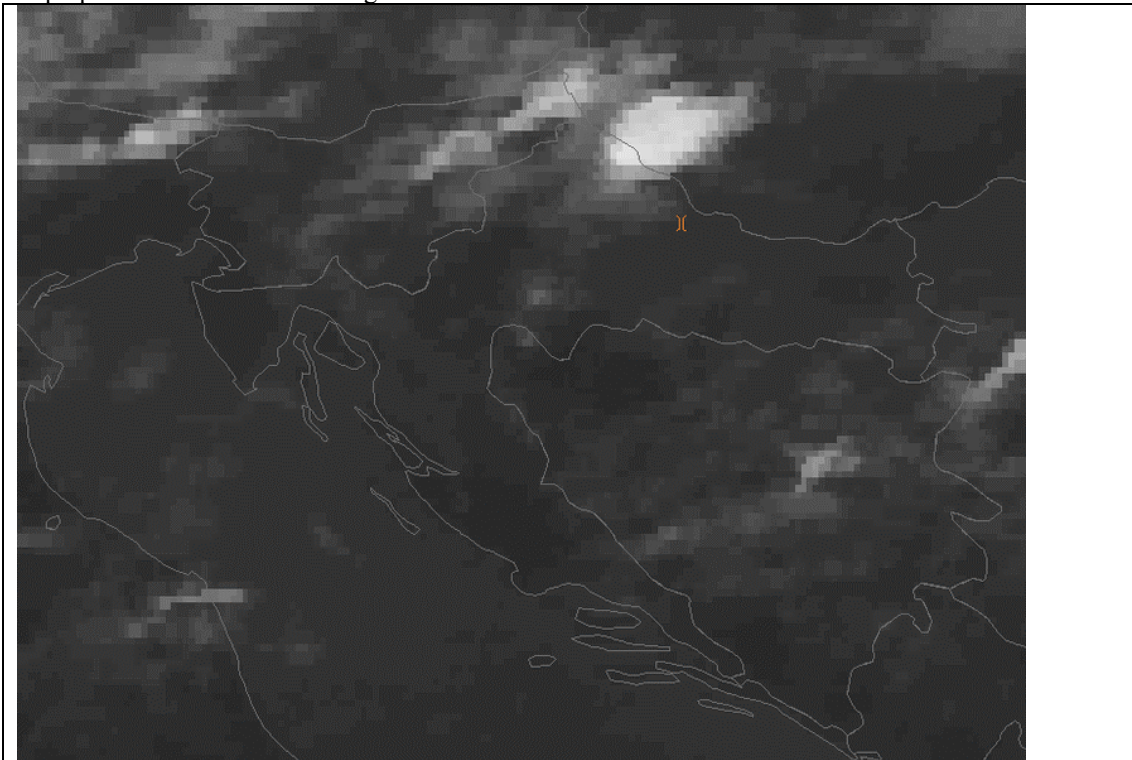


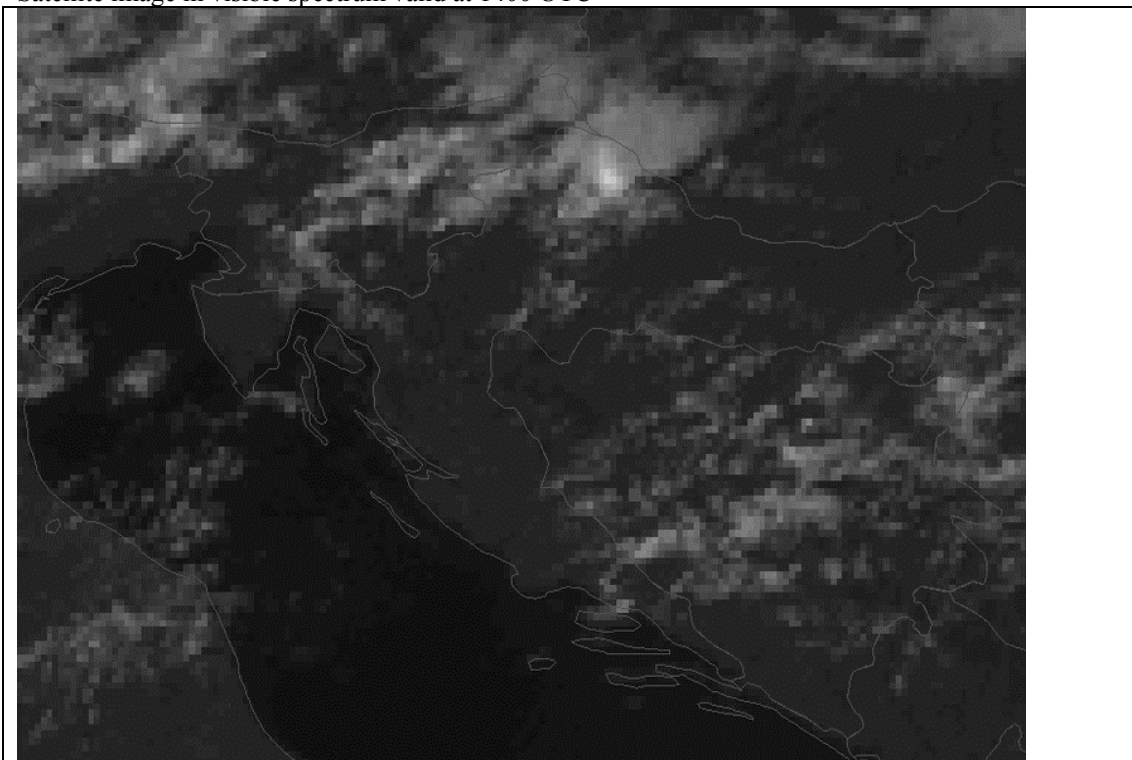
30 August 2003 afternoon case

Convective cell (post frontal convective instability) process forecast, but in wrong place and/or wrong time

Superposition of IR satellite image valid at 1400 UTC and surface observations

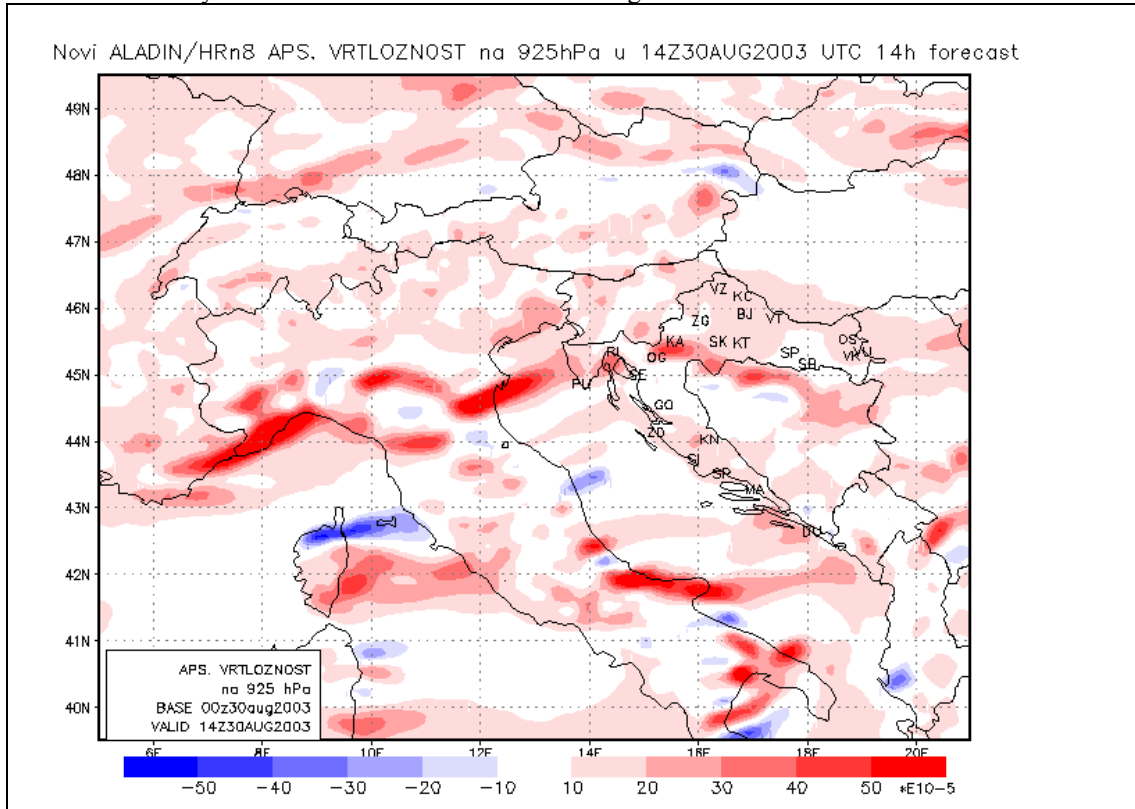


Satellite image in visible spectrum valid at 1400 UTC

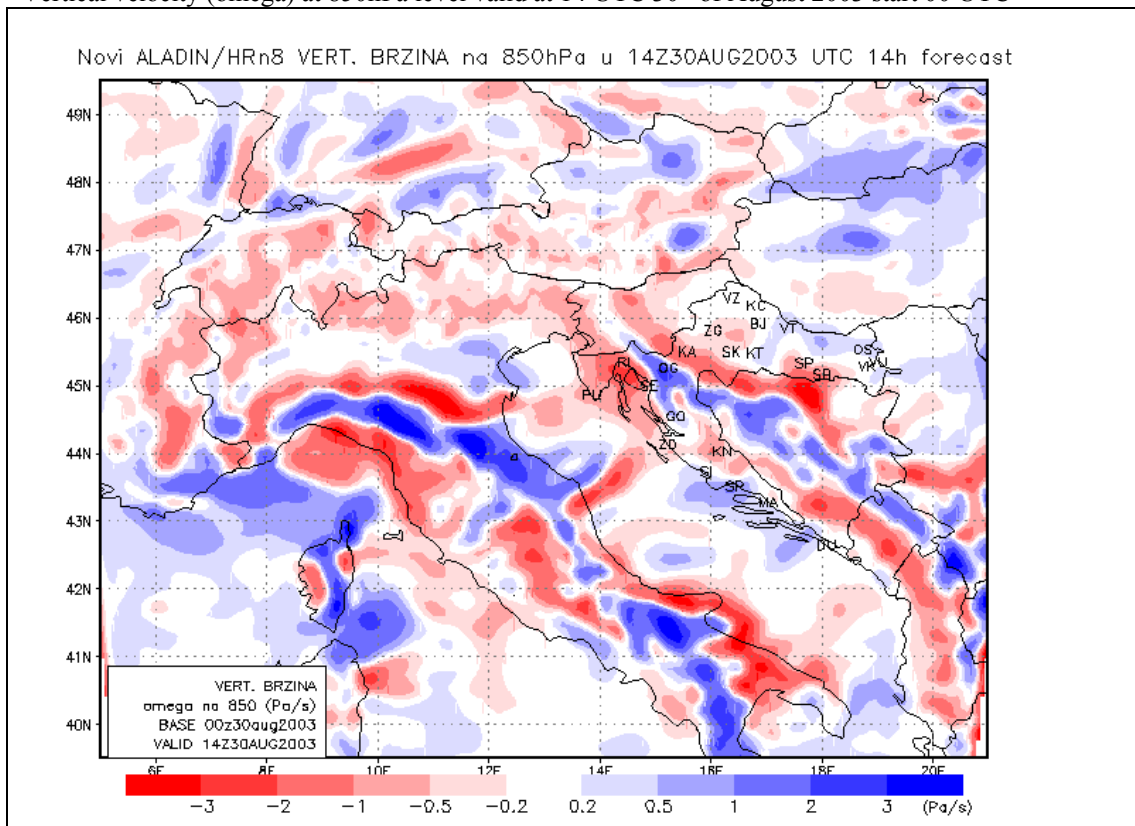


Model version: AL25T1_op2.

Absolute vorticity at 925 hPa valid at 14 UTC 30th of August 2003 start 00 UTC



Vertical velocity (omega) at 850hPa level valid at 14 UTC 30th of August 2003 start 00 UTC



For this case position of system is missed.