

# Data assimilation status Croatia

---

# DA setup

---

- IN OPERATION - no significant changes compared to last year
  - Surface: CANARI OI (cy35t1)
  - Upper air: 3DVAR (cy35t1)
  - 6h cycle (cy38t1)
  - LBC from ECMWF
- IN TEST MODE - ALADIN 4km
  - Surface: CANARI OI – default settings;
  - Upper air: copy from ECMWF
  - 6h cycle (cy38t1)
  - LBC from ECMWF

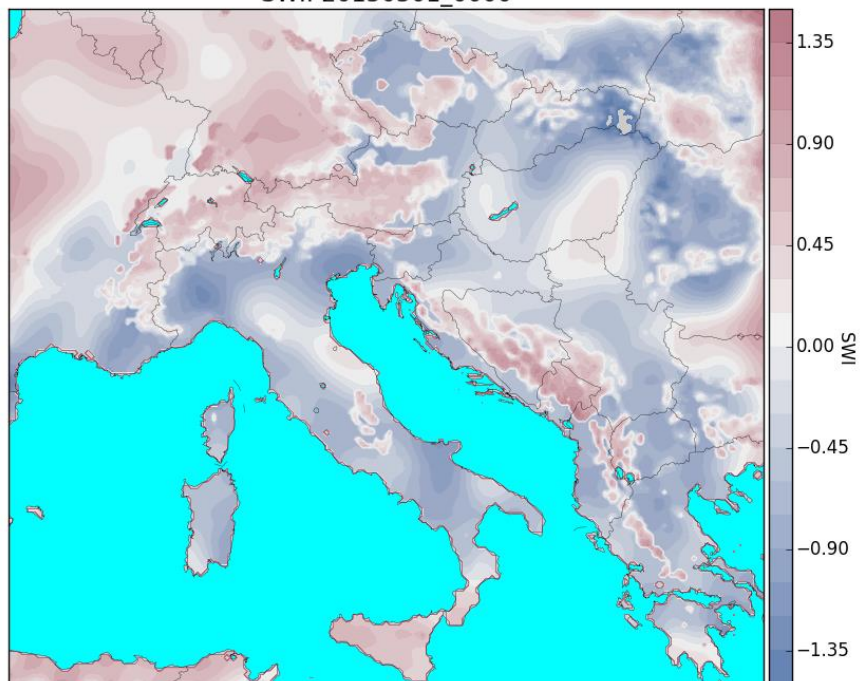
# ALADIN 4 SWI

ALADIN 8

01. March 2015.

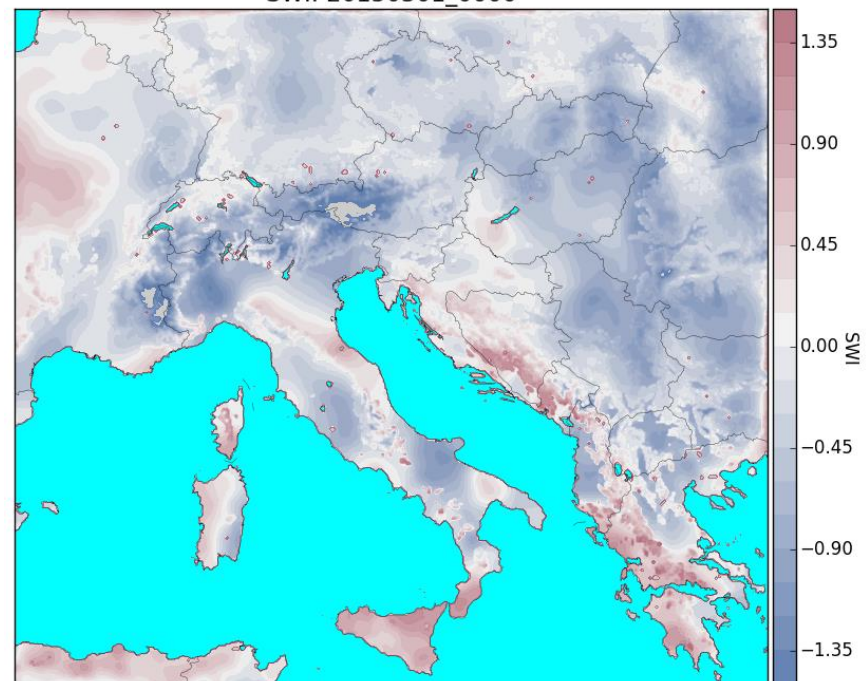
ALADIN 4

SWI: 20150301\_0000



Inicijalizacija:20150301\_0000

SWI: 20150301\_0000



Inicijalizacija:20150228\_1800

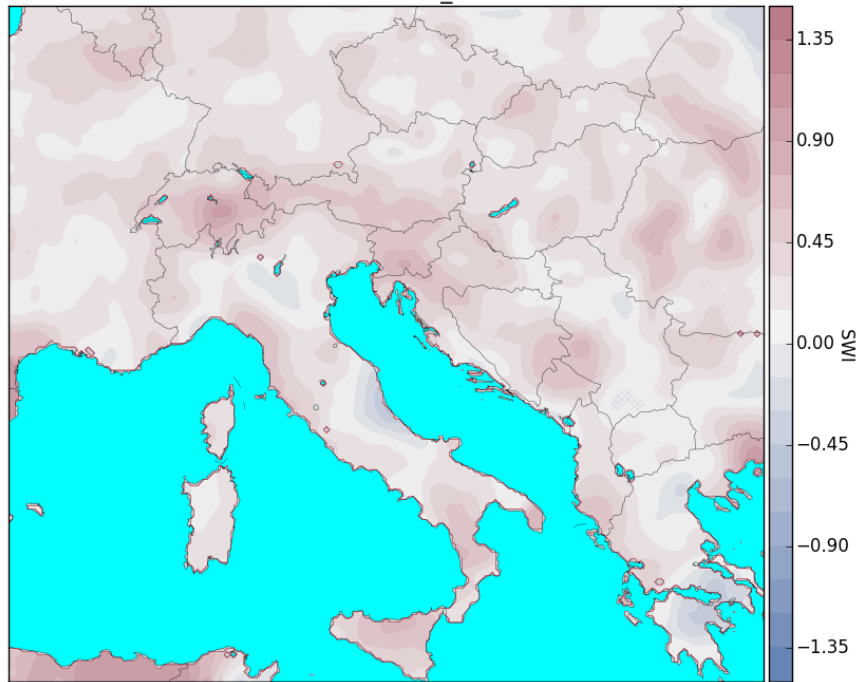
# ALADIN 4 SWI

ALADIN 8

01. September 2015.

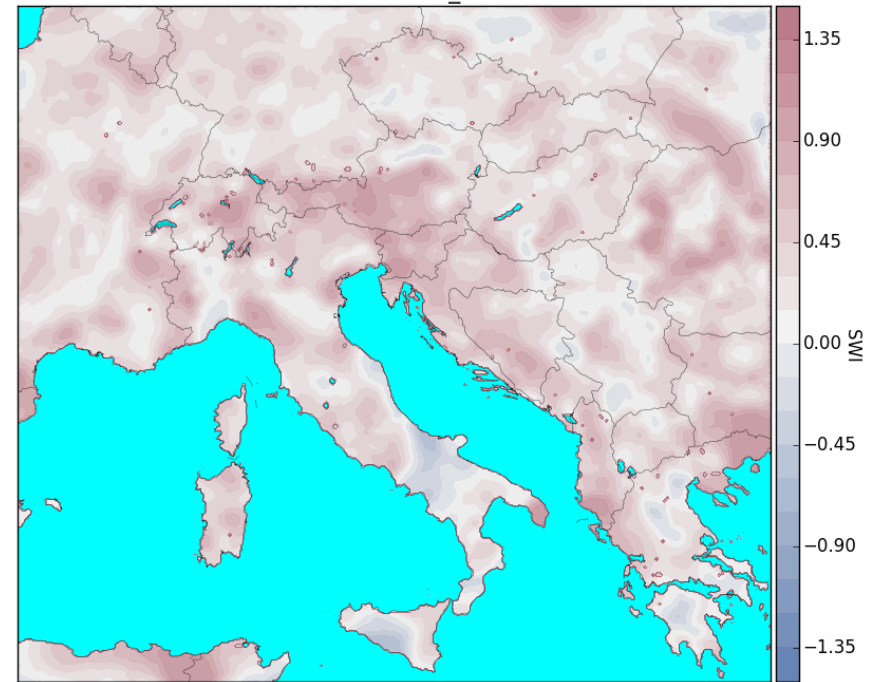
ALADIN 4

SWI: 20150901\_0000



Inicijalizacija:20150901\_0000

SWI: 20150901\_0000



Inicijalizacija:20150831\_1800

# ALADIN 4 – HARMONIE VERIFICATION

February 2015

T2m

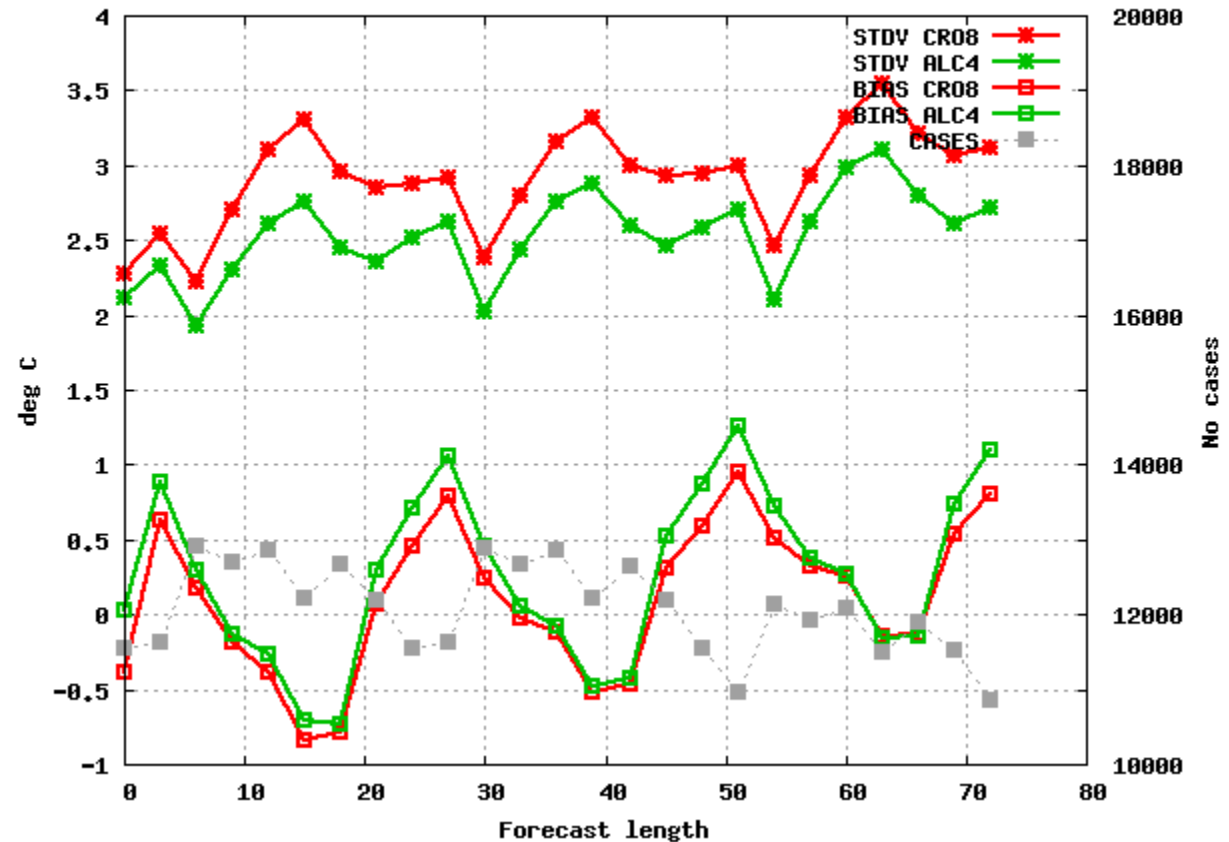
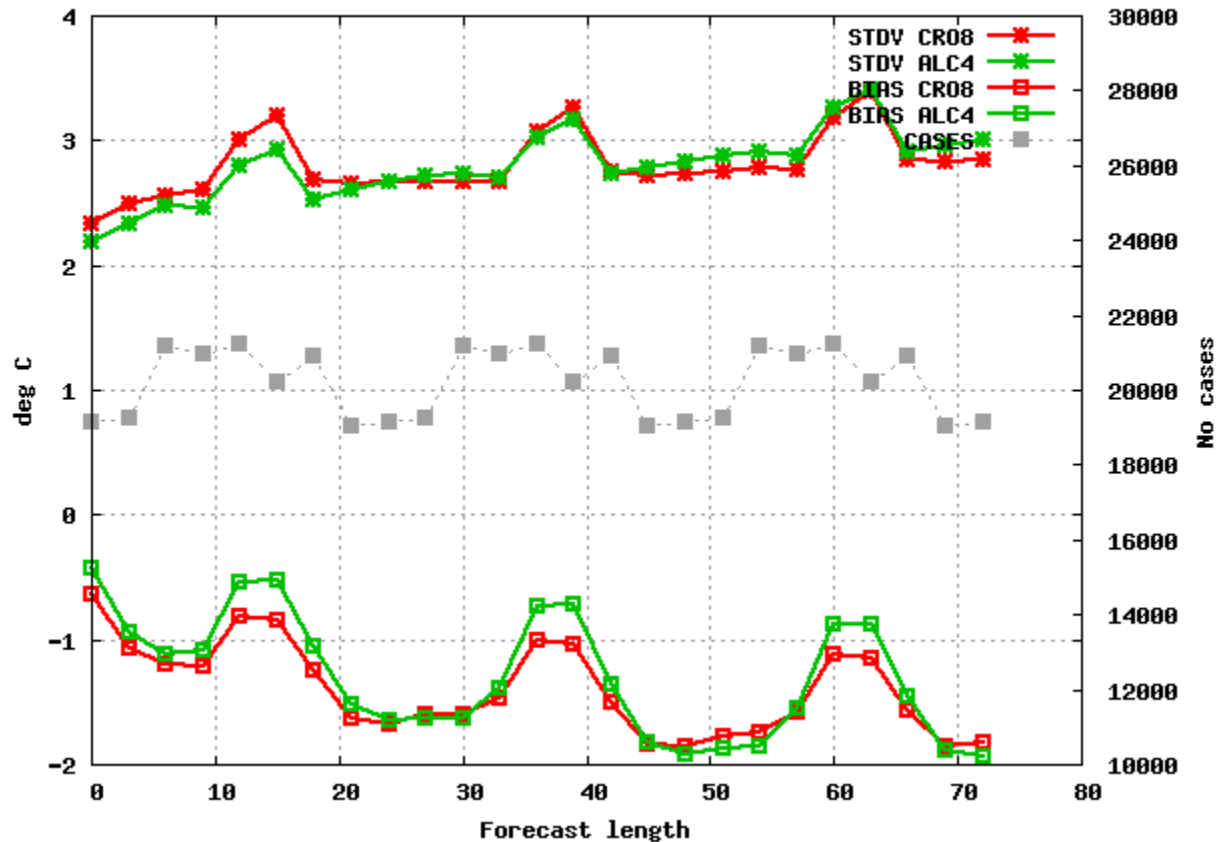
July, 2015

ALADIN 8

ALADIN 4

Selection: ALL using 776 stations  
T2m Period: 201502  
Hours: {00}

Selection: ALL using 784 stations  
T2m Period: 201507  
Hours: {00}



# ALADIN 4 – HARMONIE VERIFICATION

February 2015

RH2m

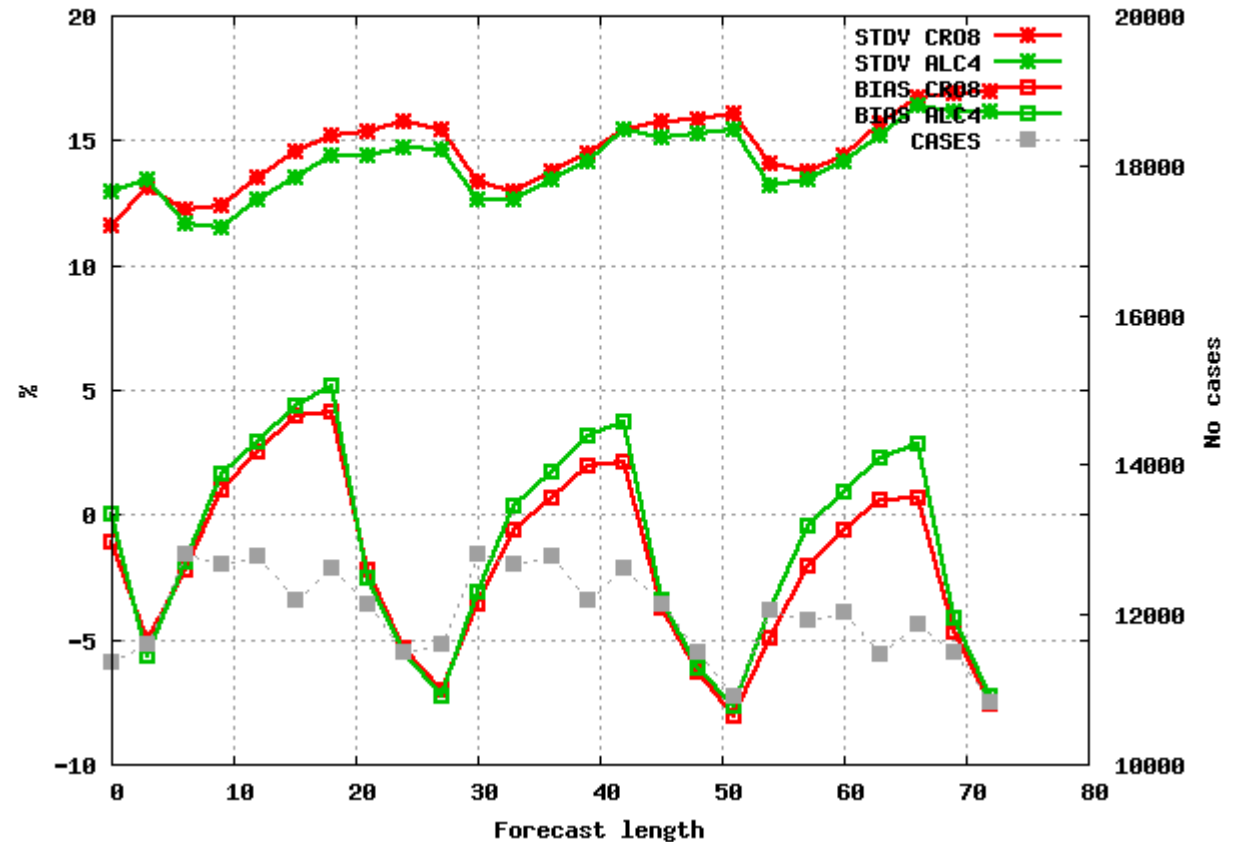
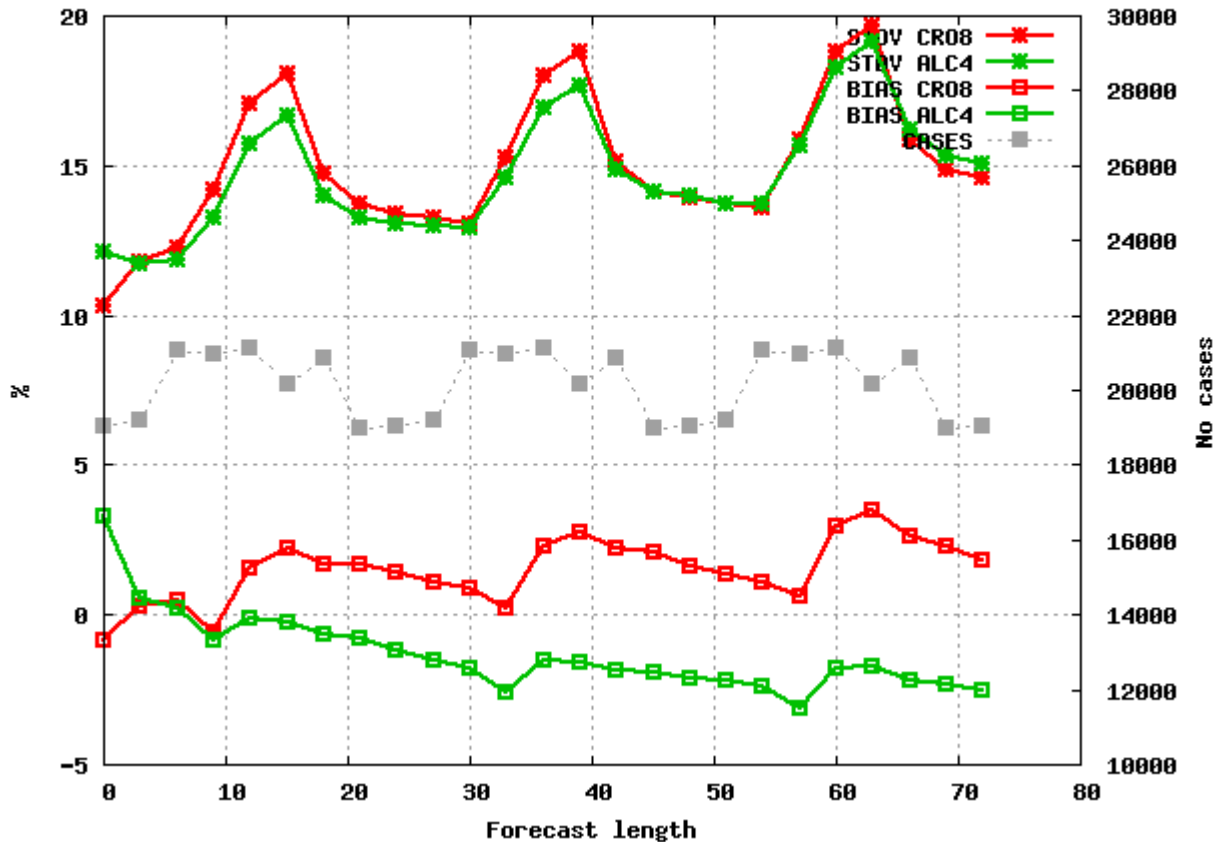
July, 2015

ALADIN 8

ALADIN 4

Selection: ALL using 772 stations  
Rh2m Period: 201502  
Hours: {00}

Selection: ALL using 781 stations  
Rh2m Period: 201507  
Hours: {00}



# ALADIN 4 – HARMONIE VERIFICATION

February 2015

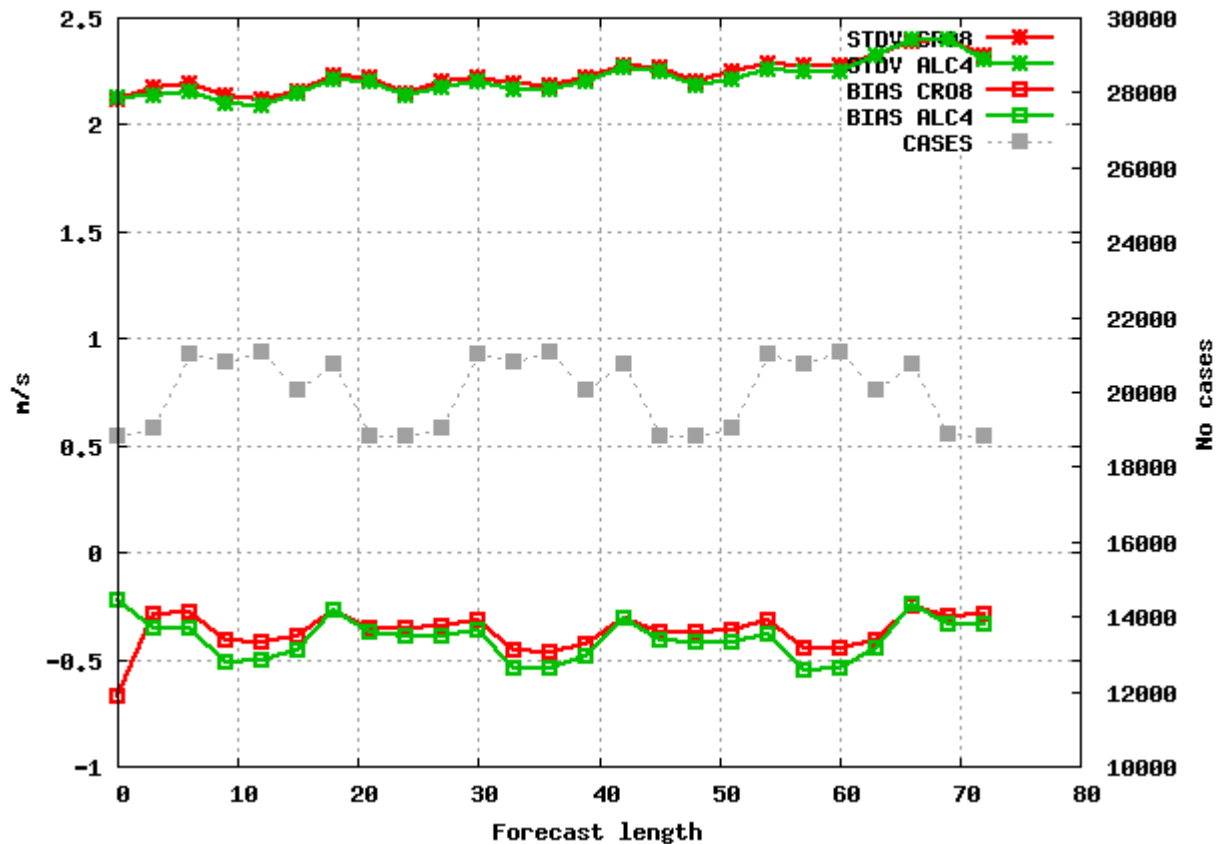
U10

July, 2015

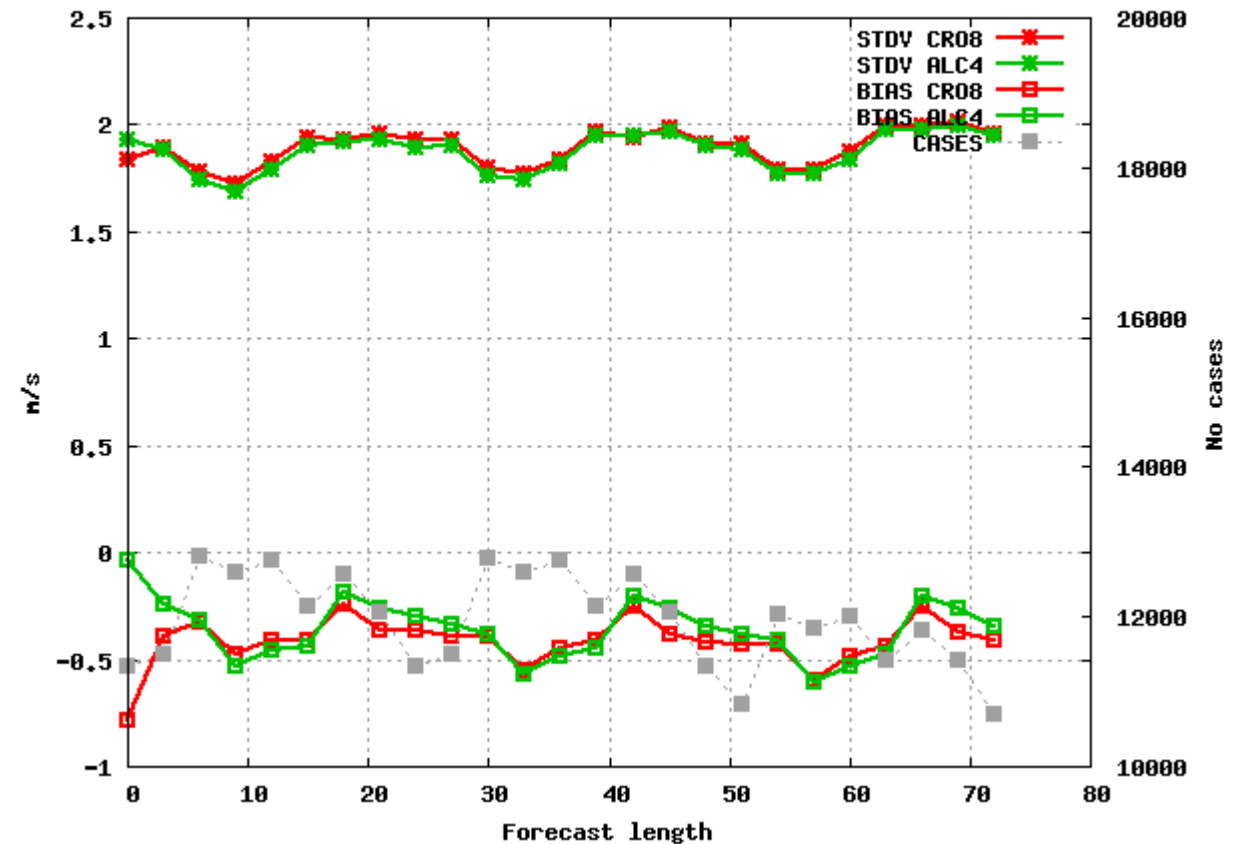
ALADIN 8

ALADIN 4

Selection: ALL using 773 stations  
U10m Period: 201502  
Hours: {00}



Selection: ALL using 781 stations  
U10m Period: 201507  
Hours: {00}



# ALADIN 4 – HARMONIE VERIFICATION

February 2015

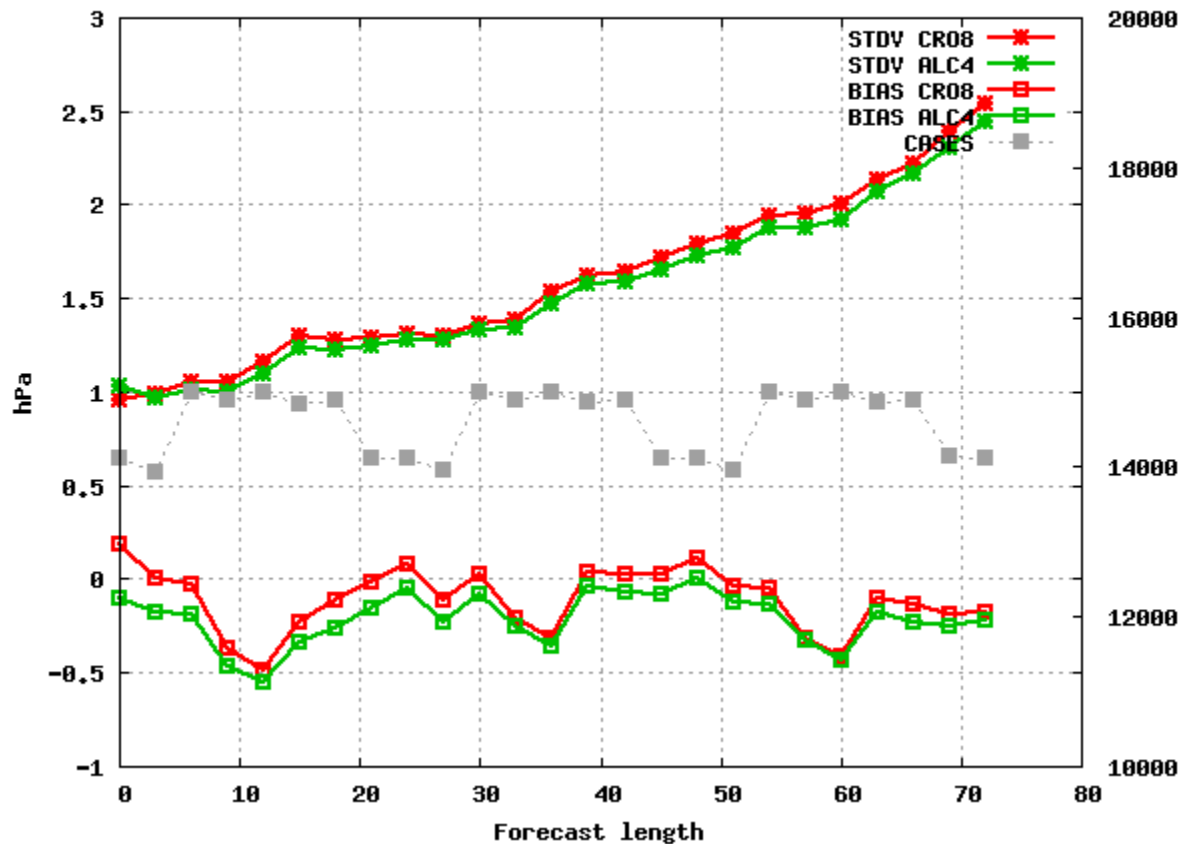
mspl

July, 2015

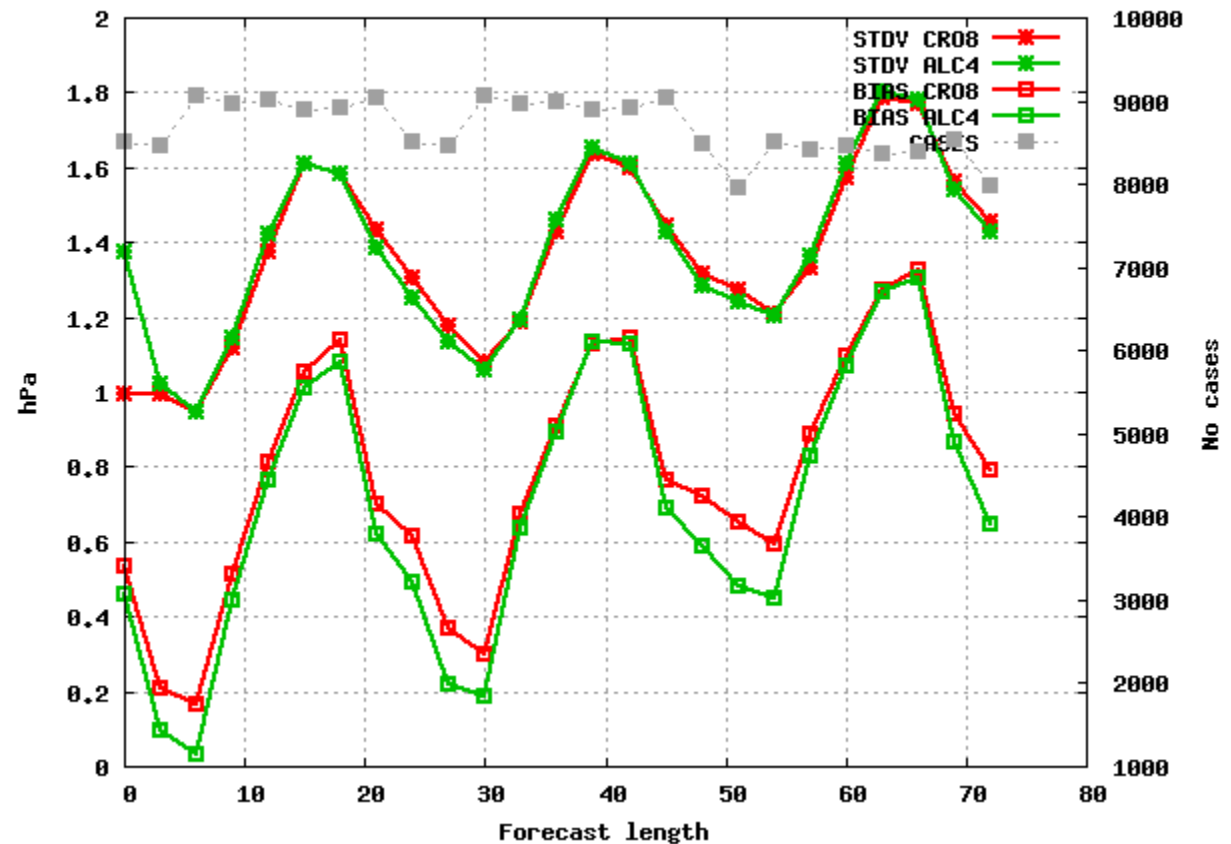
**ALADIN 8**

**ALADIN 4**

Selection: ALL using 549 stations  
Mslp Period: 201502  
Hours: {00}



Selection: ALL using 549 stations  
Mslp Period: 201507  
Hours: {00}



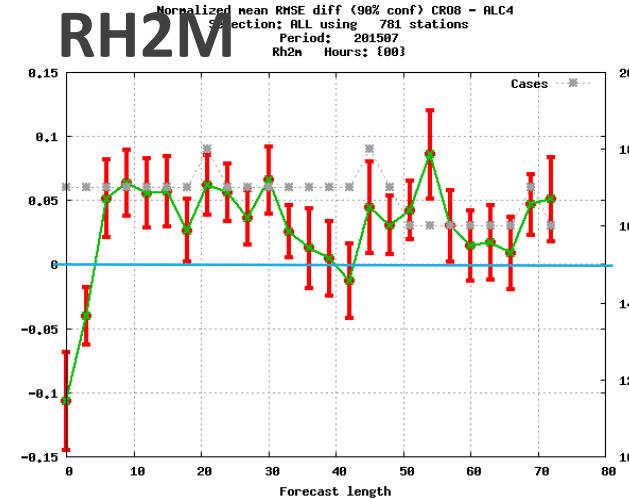
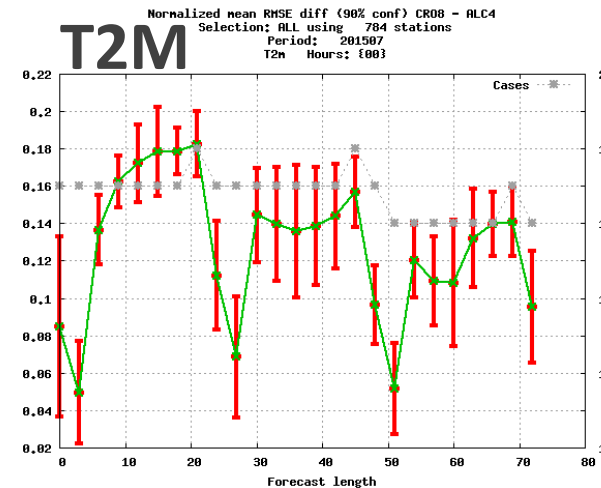
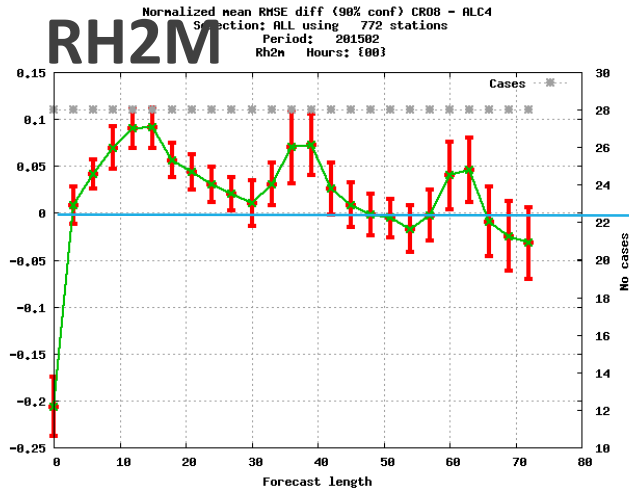
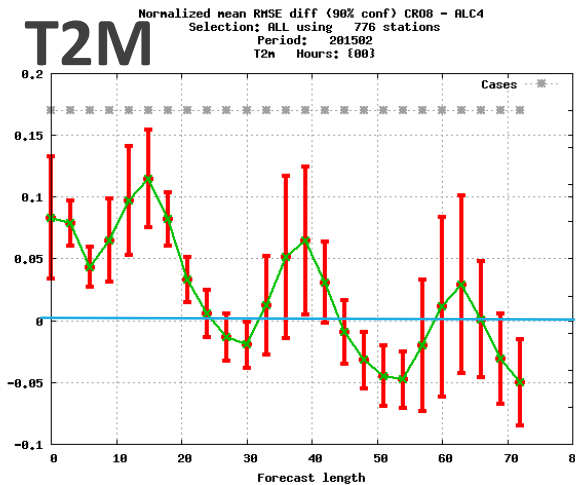
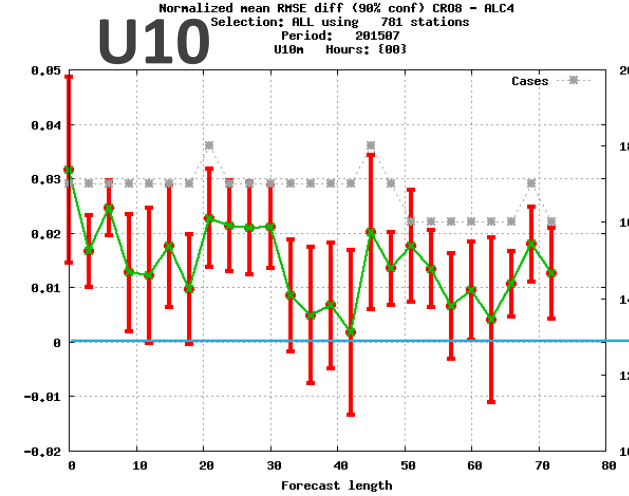
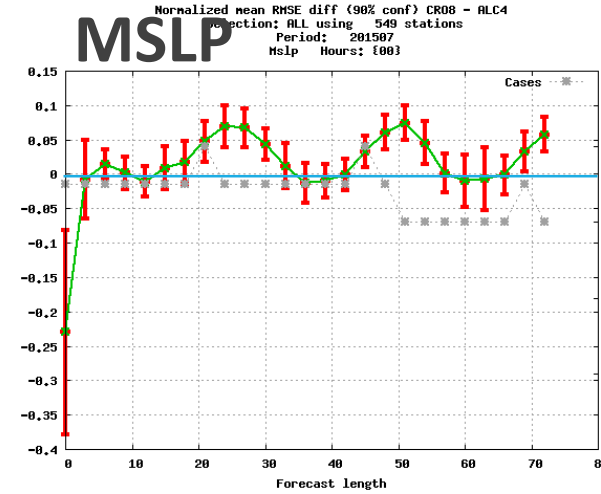
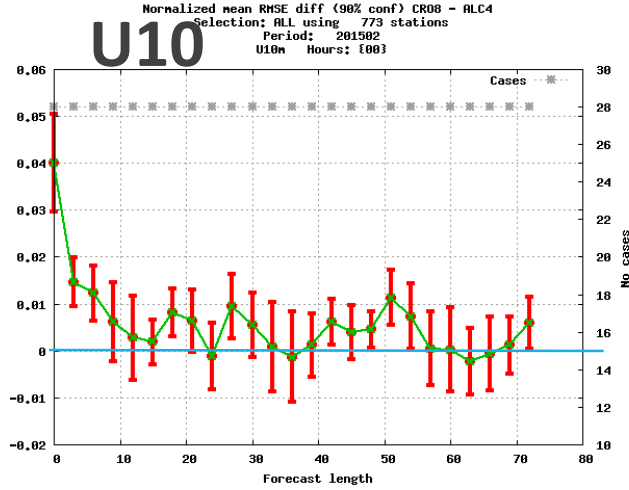
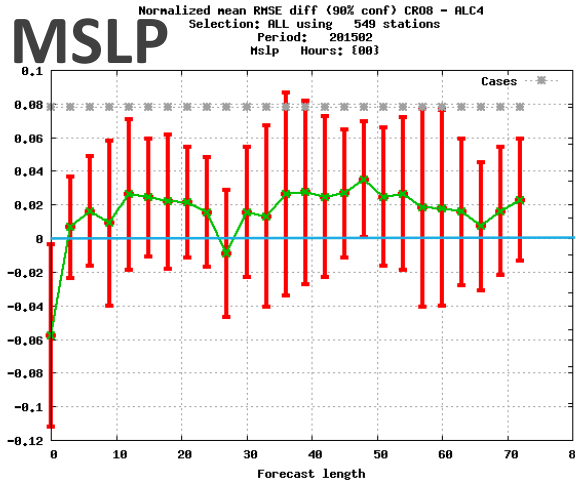


# ALADIN 4 – HARMONIE VERIFICATION

February 2015

SIGN (ALADIN8-ALADIN4)

July, 2015



# ALADIN 4 VERIFICATION

---

- ALADIN 4 better than ALADIN 8 for almost all surface parameters
- more clouds in ALADIN 4
- rain scores neutral
- case studies to be done

# PLANS

---

- compute B matrix for ALADIN 4 and implement it to DA system
- continue work on radar data assimilation
- implement new observation types: Mode S, GPS

# questionnaire

---

- What is(are) the main purpose(s) of doing DA at your institute?

Main purpose is to have better initial conditions for NWP model.

- What will be the main goal(s) regarding DA(or even NWP through DA) at your institute in the next few year?

The main goal will be to enhance forecast of severe weather, provide dedicated forecast for particular users, more accurate forecast for small regions. Also coupling to ocean model is considered and to provide better input to hydrology model.

- Doing research or doing operational DA activities has higher priority in your institute?

Operational forecast has higher priority but we are interested in research too.

- Where do You think LACE collaboration can help your local DA work most efficiently?

Observation preprocessing, overcoming common problems and to take part in common development.