

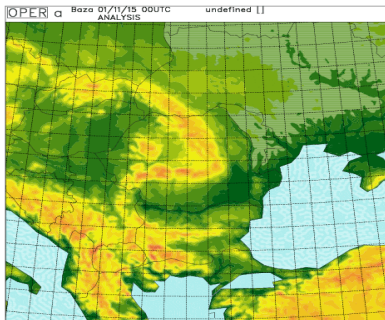
Data Assimilation - working days
14 - 16 June 2011, Budapest

Mirela Pietriși

National Meteorological Administration
Romania

Data Assimilation - present status in Romania

ALARO - ROMANIA



$\Delta x=6.5$ km, 240×240 , 49 levels

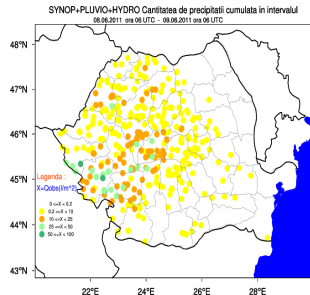
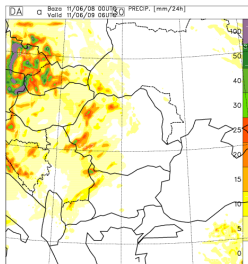
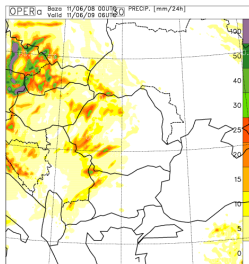
$\Delta t=240$ s, hydrostatic

4 runs/day 00, 06, 12, 18

LBC 3 hours frequency

Data Assimilation - present status in Romania

Cumulated precipitation in 24 hours:
08.06.2011, Base 00 UTC: Valid at: 09.06.2011, 06 UTC

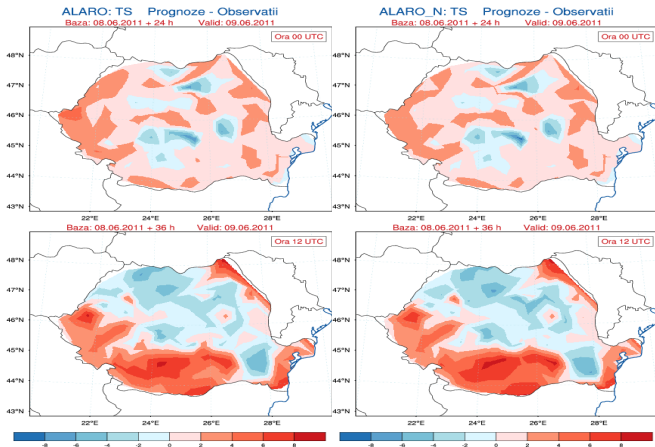


Data Assimilation - present status in Romania

Temperature at 2m: Forecast - Observation

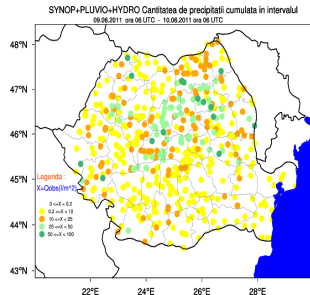
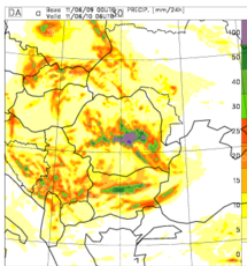
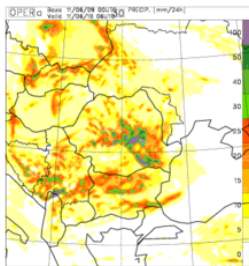
Base: 08.06.2011, 00 UTC

Valid at: 09.06.2011, 00 UTC and 12 UTC



Data Assimilation - present status in Romania

Cumulated precipitation in 24 hours:
09.06.2011, Base 00 UTC: Valid at: 10.06.2011, 06 UTC



Data Assimilation - present status in Romania

Temperature at 2m: Forecast - Observation

Base: 09.06.2011, 00 UTC

Valid at: 10.06.2011, 00 UTC and 12 UTC

