

*Regional Cooperation for
Limited Area Modeling in Central Europe*



ALARO-1 experience in Hungary

ALARO-1 WD 12-14 September 2016 Brussels

Hungarian Meteorological Service
Mihály Szűcs, Dávid Lancz



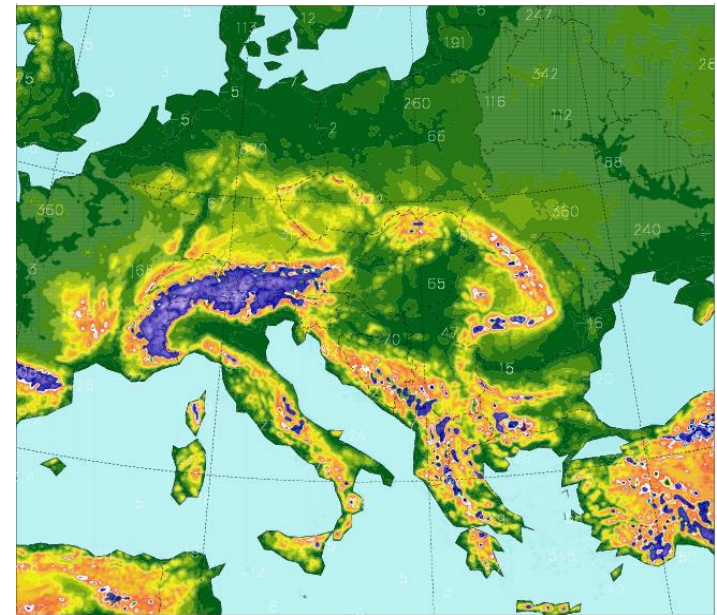
Contests

- Our operational model configuration
- 'Versions' of ALARO we have used:
 - General overview about the updates of cycles and ALARO versions
 - **Verification results of changing from ALARO-0-baseline to ALARO-I**
- Local settings and problematic parts:
 - **Negative BIAS in 2meter temperature**
 - Positive BIAS in wind and wind gust
 - Local namelist modifications in cloud diagnostics



Operational model configuration

- ‘Deterministic’ system:
 - With data assimilation
 - Coupled to IFS
 - ALARO is operational since March, 2012
 - Later represented scores are from the verification of this system
- Ensemble system:
 - Dynamical adaptation of the first 11 members from PEARP
 - ALARO is operational since November, 2011
- Resolution:
 - 8km horizontal
 - 49 vertical levels
 - 300s time steps



Updates in our system

Cy33 with old settings of ALADIN



Update was in March, 2012

Cy35 with an ALARO modset and namelist
from Prague



Update was in September, 2013

Cy36 with ALARO-0-baseline version



Update was in September, 2015

Cy38 with ALARO-0-baseline version



Update was in August, 2016

Cy38 with ALARO-I

Update to ALARO-1

Cy38 with ALARO-0-baseline version



Update was in August, 2016

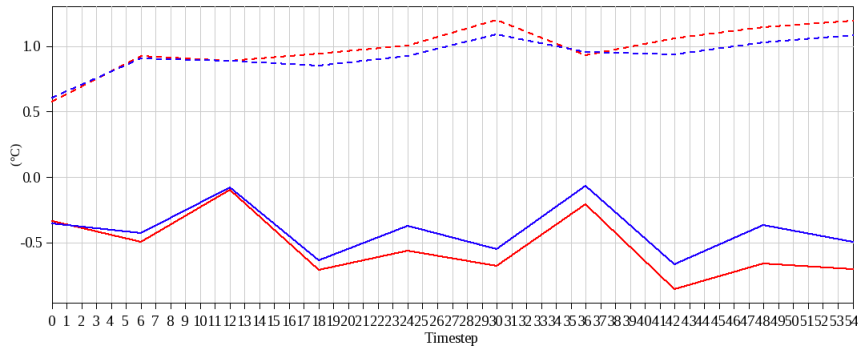
Cy38 with ALARO-1

- **Results showed moderate impact on many variables:**
 - ALARO produced better scores in verification against radiosonde measurements;
 - 2meter dewpoint has been improved;
 - Significantly less cloudiness in average;
 - Slight increasement in wind gust on the top of an existing positive bias;
 - Smaller but more intense precipitation objects in comparison with radar measurements.

Update to ALARO-1

Period: 07/15/2016 - 07/31/2016
Area: ALADIN
Variable: Temperature (850 hPa)
Runhour: 00

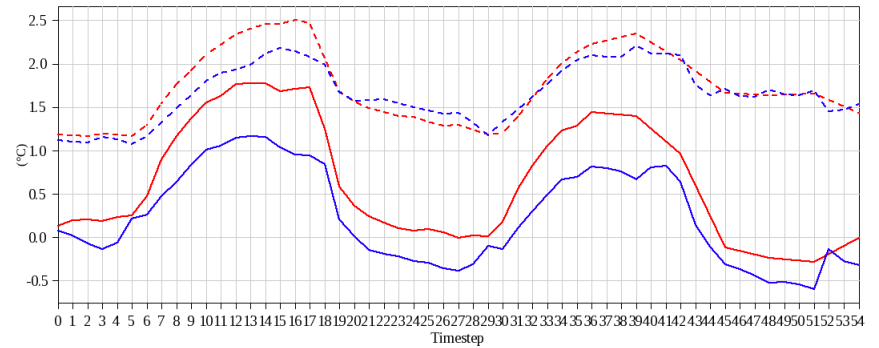
Legend (Model/Score)
- - - ALHU_OPER/RMSE
— ALHU_OPER/BIAS
- - - ALHU_3BAL.1HU/RMSE
— ALHU_3BAL.1HU/BIAS



created by OVISYS with ploticus 2016.09.08:07:09:26

Period: 07/15/2016 - 07/31/2016
Area: HUN_ALL SYNOP max 400m
Variable: Dewpoint
Runhour: 00

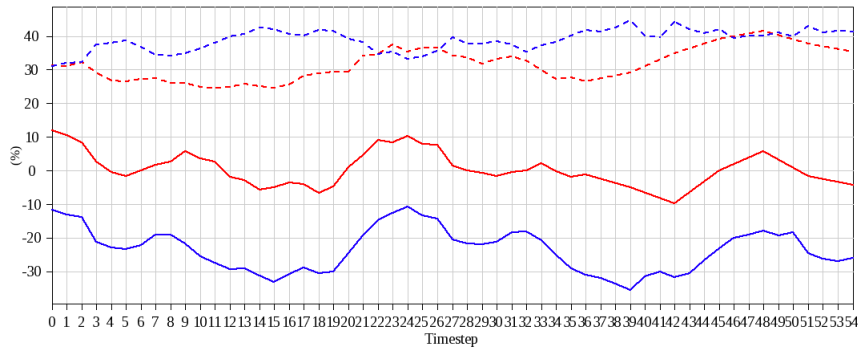
Legend (Model/Score)
- - - ALHU_OPER/RMSE
— ALHU_OPER/BIAS
- - - ALHU_3BAL.1HU/RMSE
— ALHU_3BAL.1HU/BIAS



created by OVISYS with ploticus 2016.09.08:07:11:04

Period: 07/15/2016 - 07/31/2016
Area: HUN_ALL SYNOP max 400m
Variable: Cloudiness
Runhour: 00

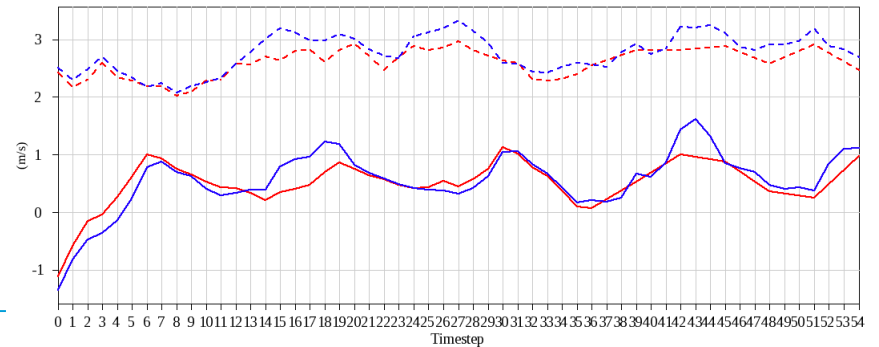
Legend (Model/Score)
- - - ALHU_OPER/RMSE
— ALHU_OPER/BIAS
- - - ALHU_3BAL.1HU/RMSE
— ALHU_3BAL.1HU/BIAS



created by OVISYS with ploticus 2016.09.08:07:12:22

Period: 07/15/2016 - 07/31/2016
Area: HUN_ALL SYNOP max 400m
Variable: Wind gust
Runhour: 00

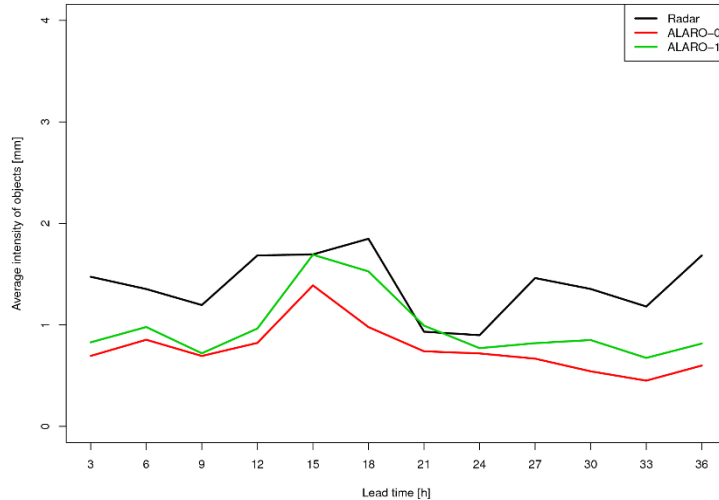
Legend (Model/Score)
- - - ALHU_OPER/RMSE
— ALHU_OPER/BIAS
- - - ALHU_3BAL.1HU/RMSE
— ALHU_3BAL.1HU/BIAS



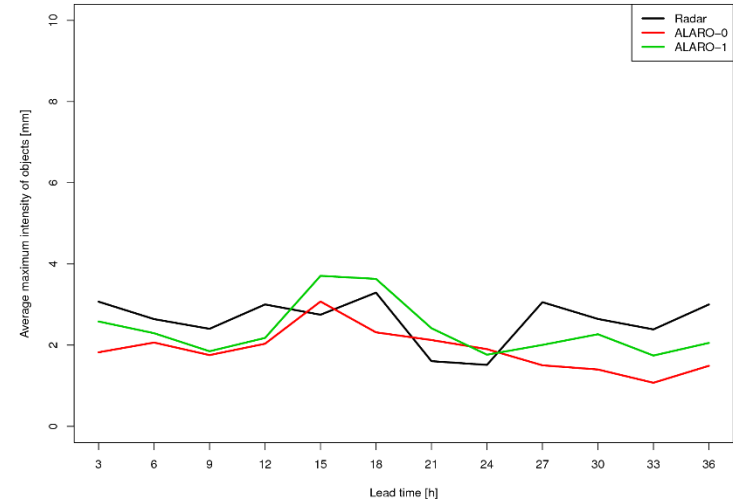
created by OVISYS with ploticus 2016.09.08:07:12:37

Update to ALARO-1

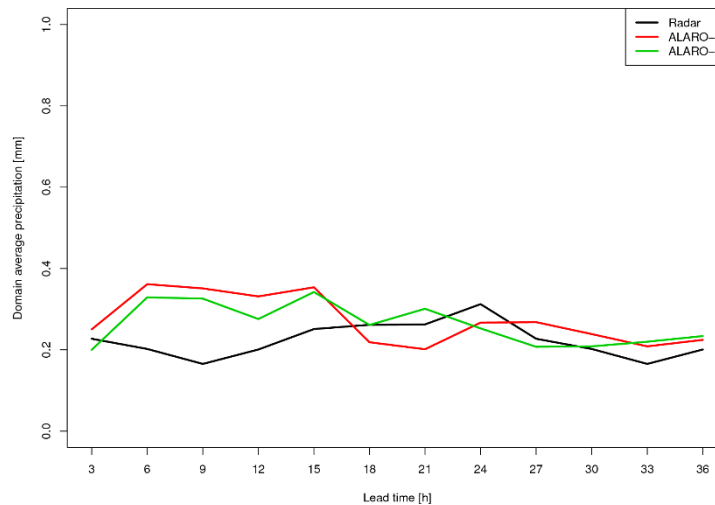
Average intensity of objects [mm]



Average maximum intensity of objects [mm]



Domain average precipitation [mm]



2m diagnostic

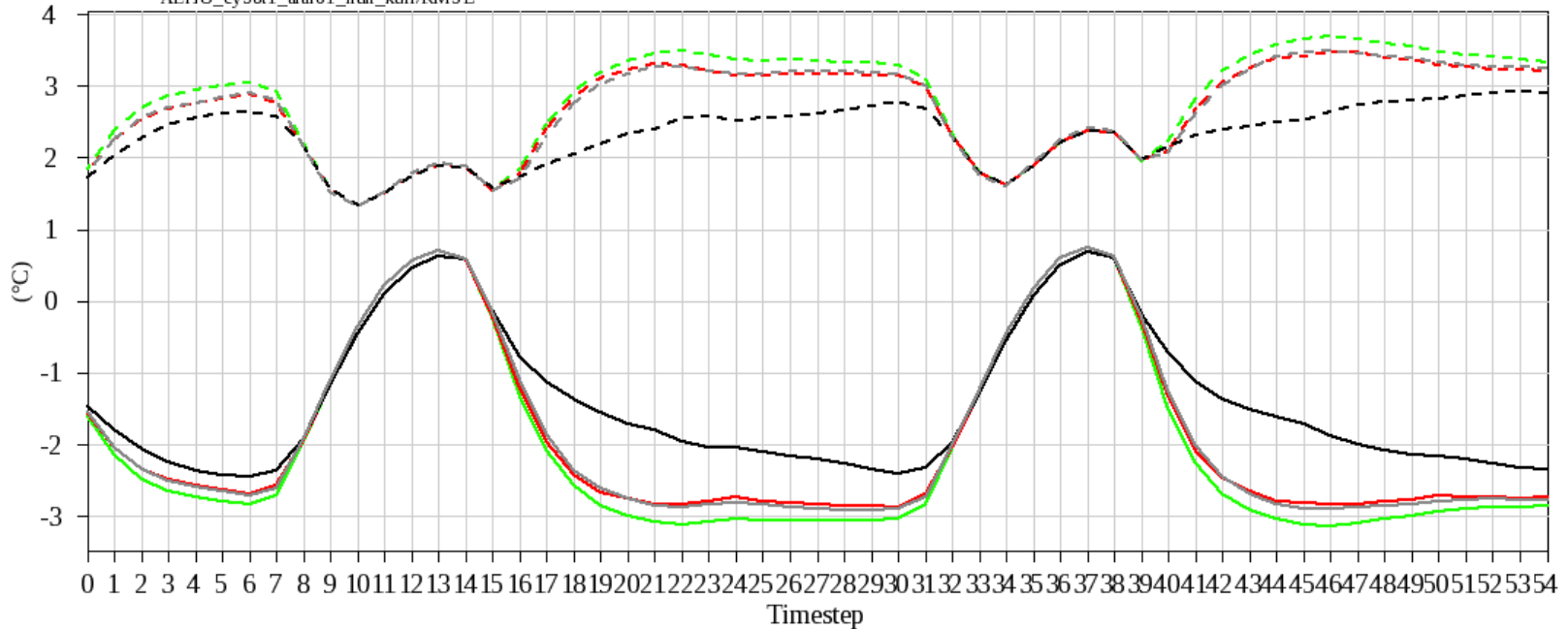
- Testing of methods for 2m interpolation:
 - New modset from LACE stay in Prague – Martin Dian, Ján Mašek (alaro I)
 - Original Geleyn + Kullmann - currently used (alaro I_orig)
 - Kullmann solution (alaro I_kull)
 - Upgraded Kullmann solution – Ri number dependent (alaro I_kull2)
- 2 type of RCTVEG (vegetation thermal coefficient)
 - HUN – $2.0 \cdot 10^{-5}$
 - CZ – $0.8 \cdot 10^{-5}$

2m temperature (HUN RCTEG)

Period: 12/04/2015 - 12/10/2015
Area: HUN_ALL max 400m
Variable: Temperature (2m)
Runhour: 00

Legend (Model/Score)

- alaro_cy38t1_alaro1_hun/RMSE
- alaro_cy38t1_alaro1_hun/BIAS
- ALHU_cy38t1_alaro1_hun_orig/RMSE
- ALHU_cy38t1_alaro1_hun_orig/BIAS
- ALHU_cy38t1_alaro1_hun_kull/RMSE
- ALHU_cy38t1_alaro1_hun_kull/BIAS



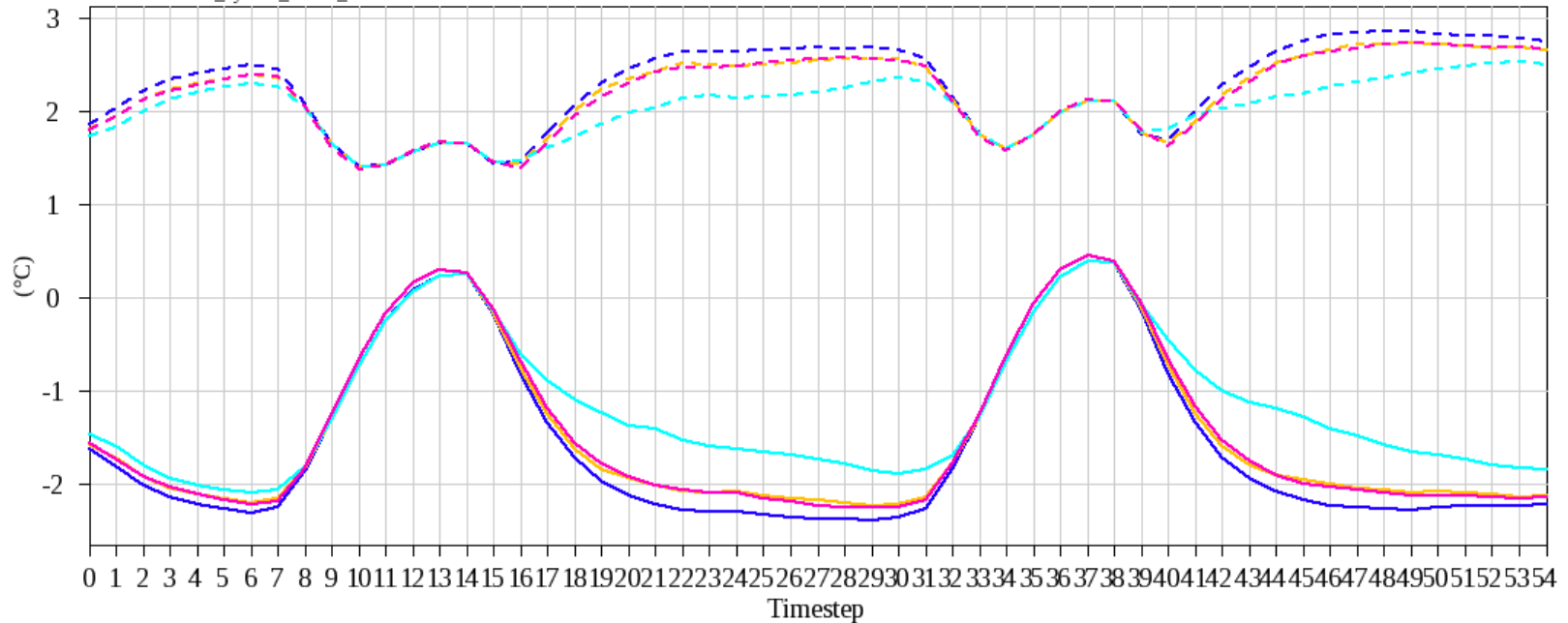
created by OV1SY S with ploticus 2016.09.01 11:46:18

2m temperature (CZ RCTEG)

Period: 12/04/2015 - 12/10/2015
 Area: HUN_ALL max 400m
 Variable: Temperature (2m)
 Runhour: 00

Legend (Model/Score)

- alaro_cy38t1_alaro1/RMSE
- alaro_cy38t1_alaro1/BIAS
- ALHU_cy38t1_alaro1_orig/RMSE
- ALHU_cy38t1_alaro1_orig/BIAS
- ALHU_cy38t1_alaro1_kull/RMSE
- ALHU_cy38t1_alaro1_kull/BIAS
- ALHU_cy38t1_alaro1_kull2/RMSE
- ALHU_cy38t1_alaro1_kull2/BIAS



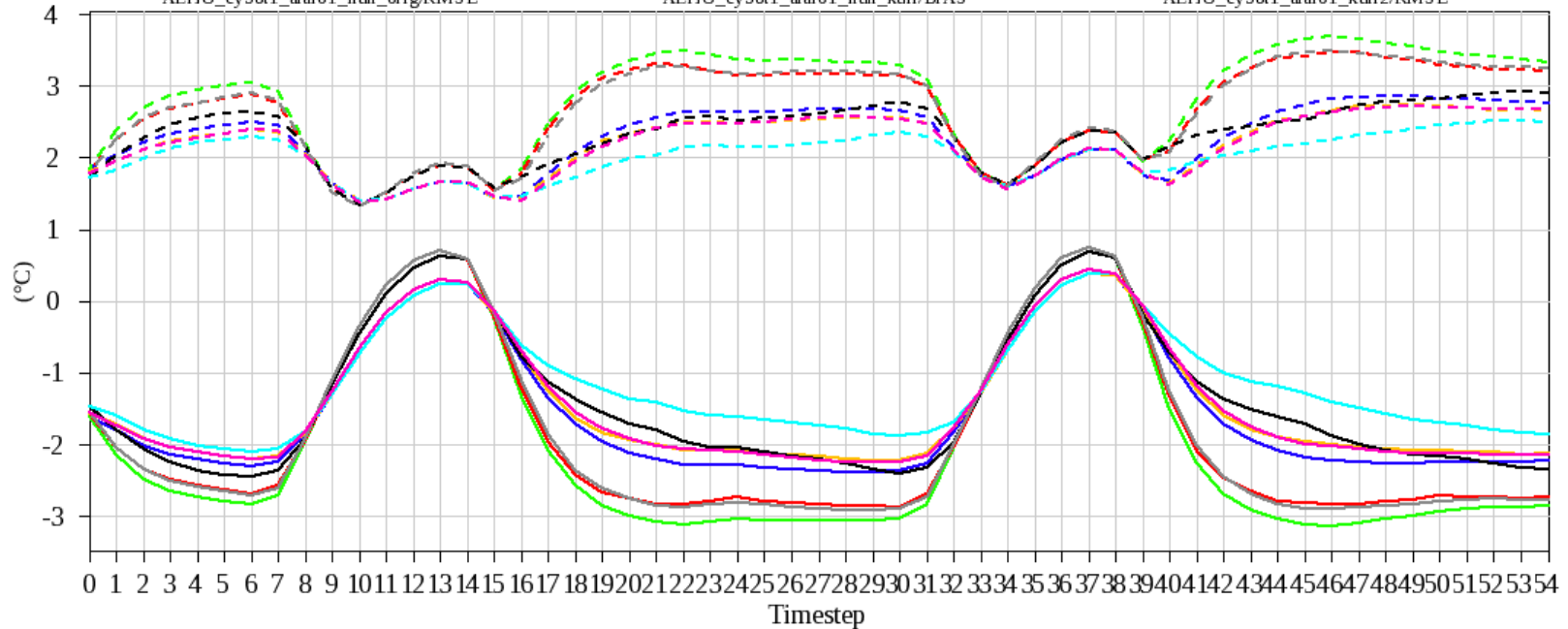
created by OV1SY S with ploticus 2016.08.18 08:28:47

2m temperature

Period: 12/04/2015 - 12/10/2015
Area: HUN_ALL max 400m
Variable: Temperature (2m)
Runhour: 00

Legend (Model/Score)

- | | | |
|--|--|---|
| --- alaro_cy38t1_alaro1/RMSE | — ALHU_cy38t1_alaro1_hun_orig/BIAS | - - - ALHU_cy38t1_alaro1_kull/RMSE |
| — alaro_cy38t1_alaro1/BIAS | - - - ALHU_cy38t1_alaro1_orig/RMSE | — ALHU_cy38t1_alaro1_kull/BIAS |
| - - - alaro_cy38t1_alaro1_hun/RMSE | — ALHU_cy38t1_alaro1_orig/BIAS | - - - ALHU_cy38t1_alaro1_hun_kull2/RMSE |
| — alaro_cy38t1_alaro1_hun/BIAS | - - - ALHU_cy38t1_alaro1_hun_kull/RMSE | — ALHU_cy38t1_alaro1_hun_kull2/BIAS |
| - - - ALHU_cy38t1_alaro1_hun_orig/RMSE | — ALHU_cy38t1_alaro1_hun_kull/BIAS | - - - ALHU_cy38t1_alaro1_kull2/RMSE |



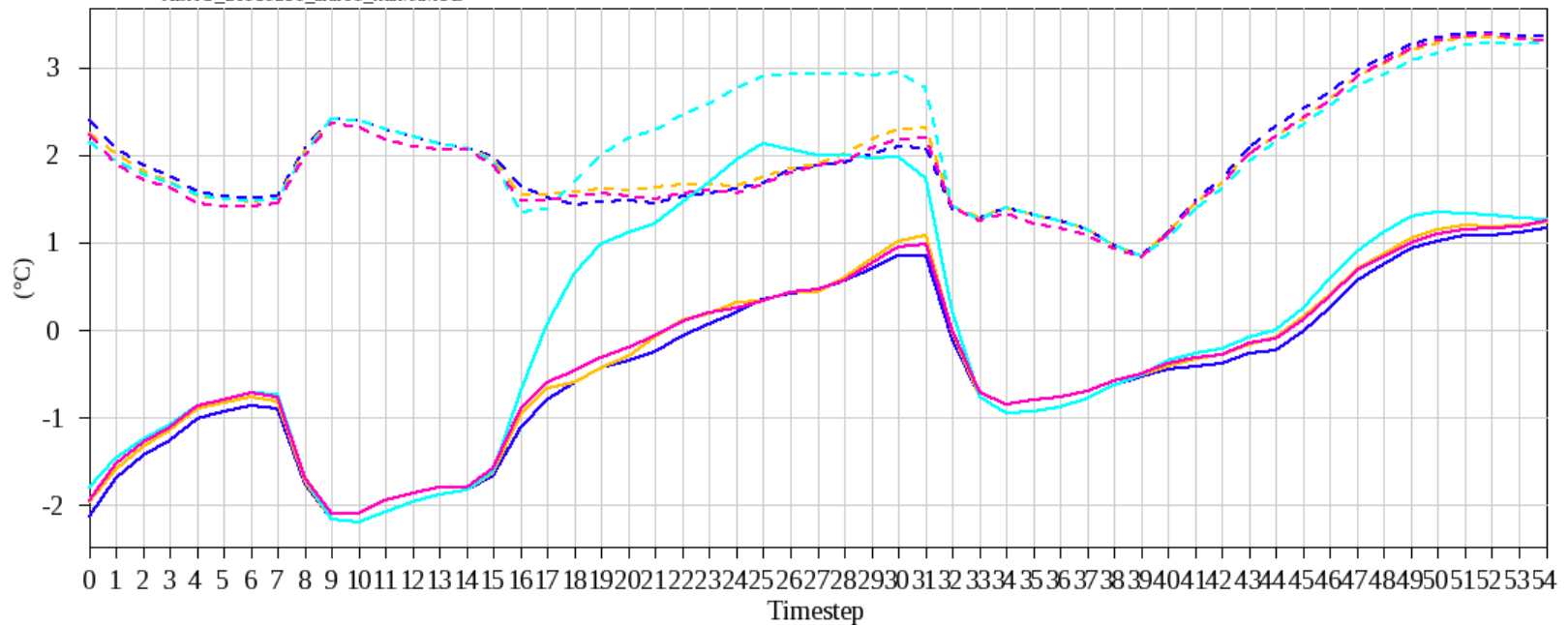
created by OV155 with ploticus 2016.08.17 12:50:08

2m temperature

Period: **12/31/2015 - 01/01/2016**
 Area: **HUN_ALL max 400m**
 Variable: **Temperature (2m)**
 Runhour: **00**

Legend (Model/Score)

- ALHU_20151231_alaro1/RMSE
- ALHU_20151231_alaro1/BIAS
- ALHU_20151231_alaro1_orig/RMSE
- ALHU_20151231_alaro1_orig/BIAS
- ALHU_20151231_alaro1_kull/RMSE
- ALHU_20151231_alaro1_kull/BIAS
- ALHU_20151231_alaro1_kull2/RMSE
- ALHU_20151231_alaro1_kull2/BIAS



created by OVISYS with ploticus 2016.08.18 08:26:12

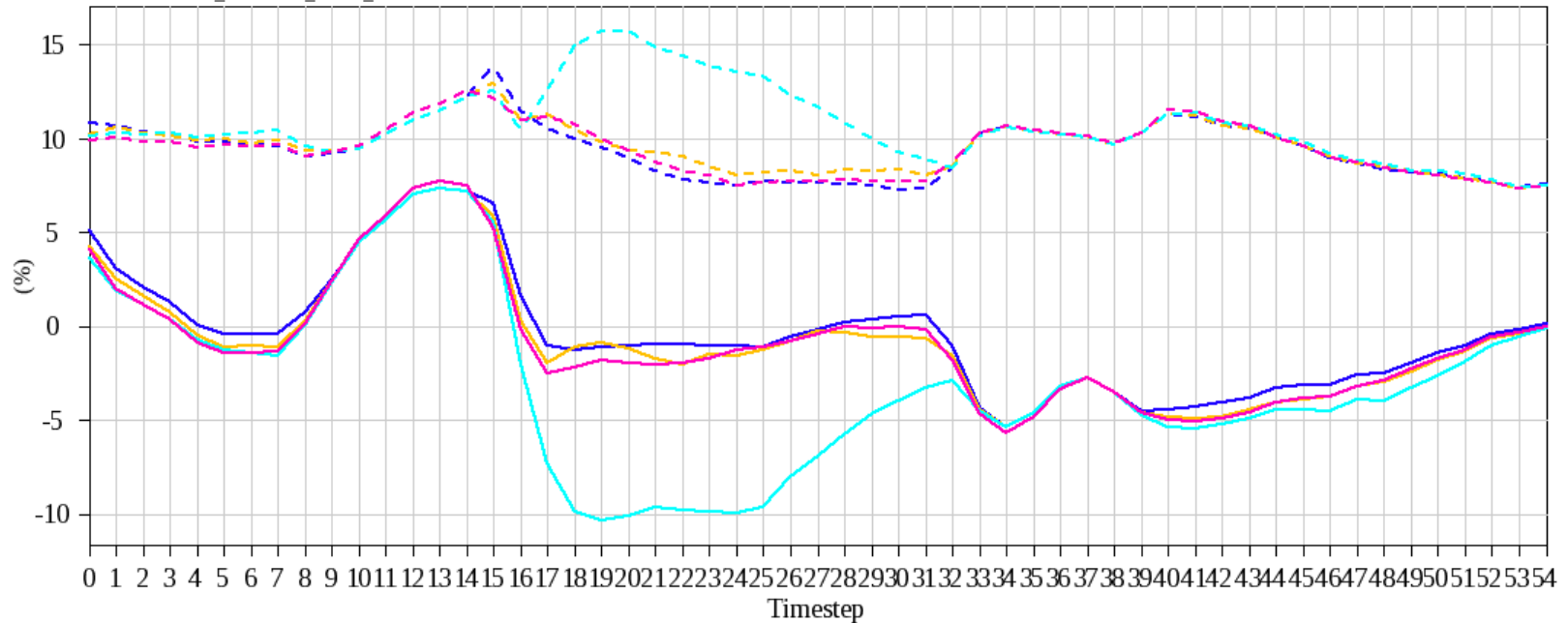


2m relative humidity

Period: **12/31/2015 - 01/01/2016**
 Area: **HUN_ALL max 400m**
 Variable: **Relative humidity (2m)**
 Runhour: **00**

Legend (Model/Score)

- ALHU_20151231_alaro1/RMSE
- ALHU_20151231_alaro1/BIAS
- ALHU_20151231_alaro1_orig/RMSE
- ALHU_20151231_alaro1_orig/BIAS
- ALHU_20151231_alaro1_kull/RMSE
- ALHU_20151231_alaro1_kull/BIAS
- ALHU_20151231_alaro1_kull2/RMSE
- ALHU_20151231_alaro1_kull2/BIAS

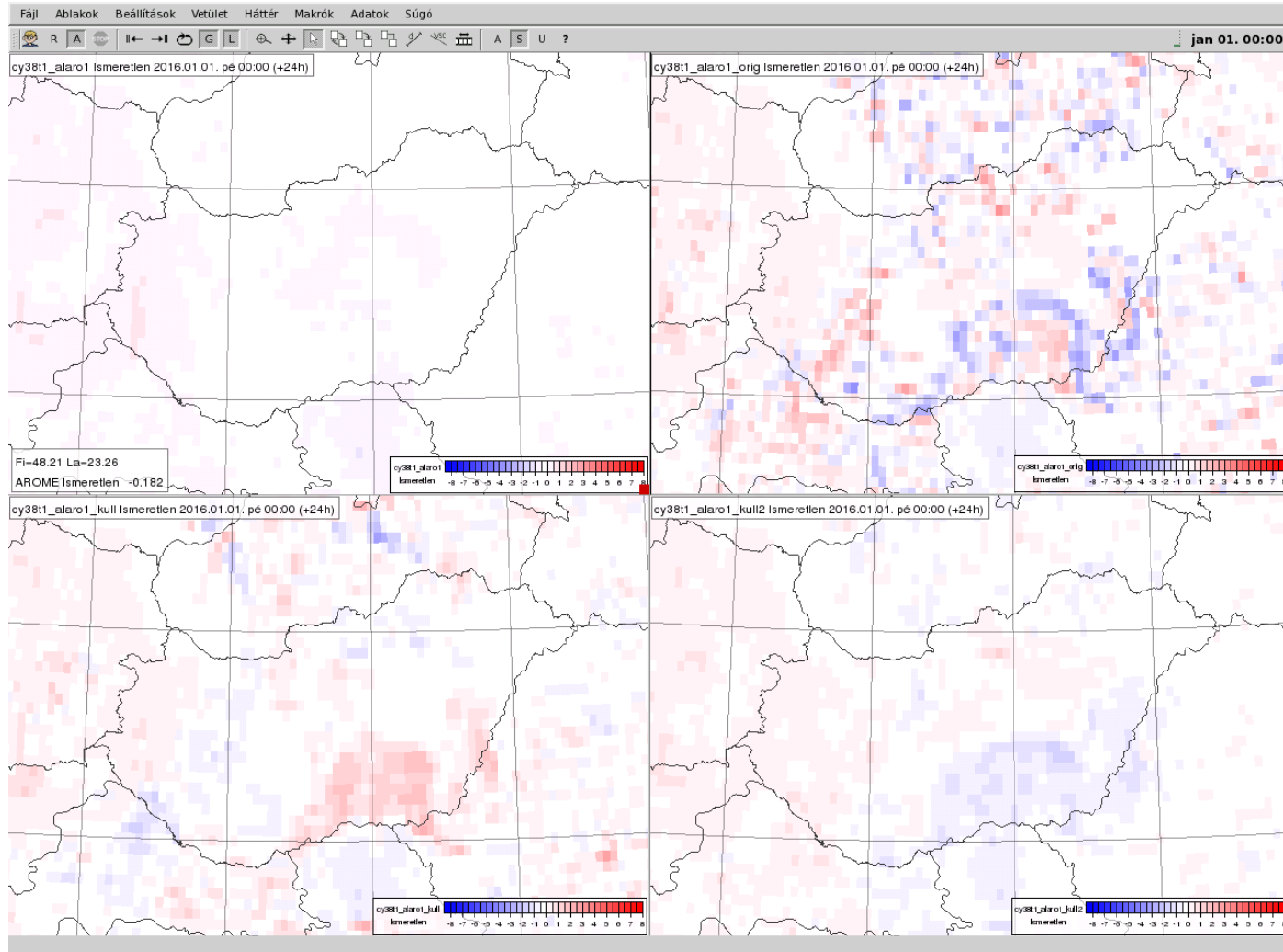


created by OVISYS with ploticus 2016.09.05 08:27:08

2m diagnostic



2m Temp. difference 12/31/2015 (24h-23h)

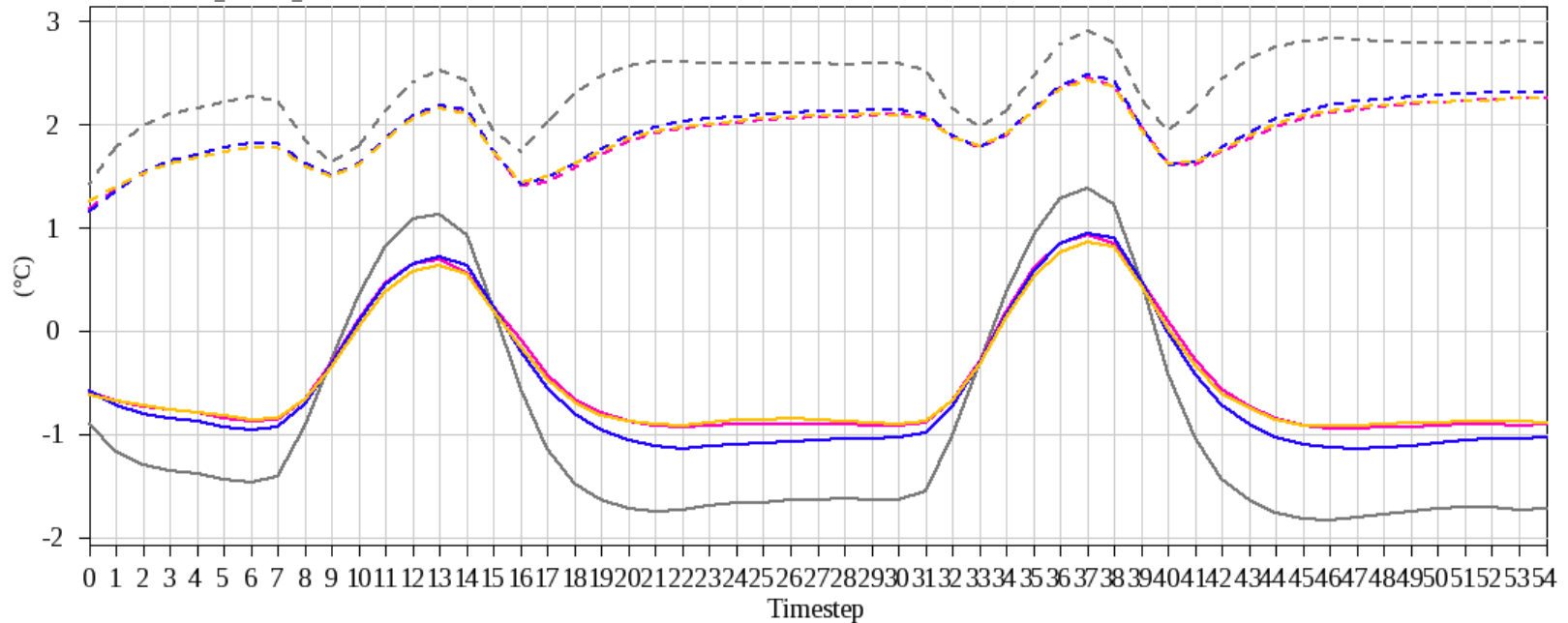


2m temperature

Period: 12/02/2015 - 12/31/2015
 Area: HUN_ALL max 400m
 Variable: Temperature (2m)
 Runhour: 00

Legend (Model/Score)

- ALHU_2015dec_alaro1_hun_kull2/RMSE
- ALHU_2015dec_alaro1_hun_kull2/BIAS
- ALHU_2015dec_alaro1_kull2/RMSE
- ALHU_2015dec_alaro1_kull2/BIAS
- ALHU_2015dec_alaro1/RMSE
- ALHU_2015dec_alaro1/BIAS
- ALHU_2015dec_alaro1_orig/RMSE
- ALHU_2015dec_alaro1_orig/BIAS



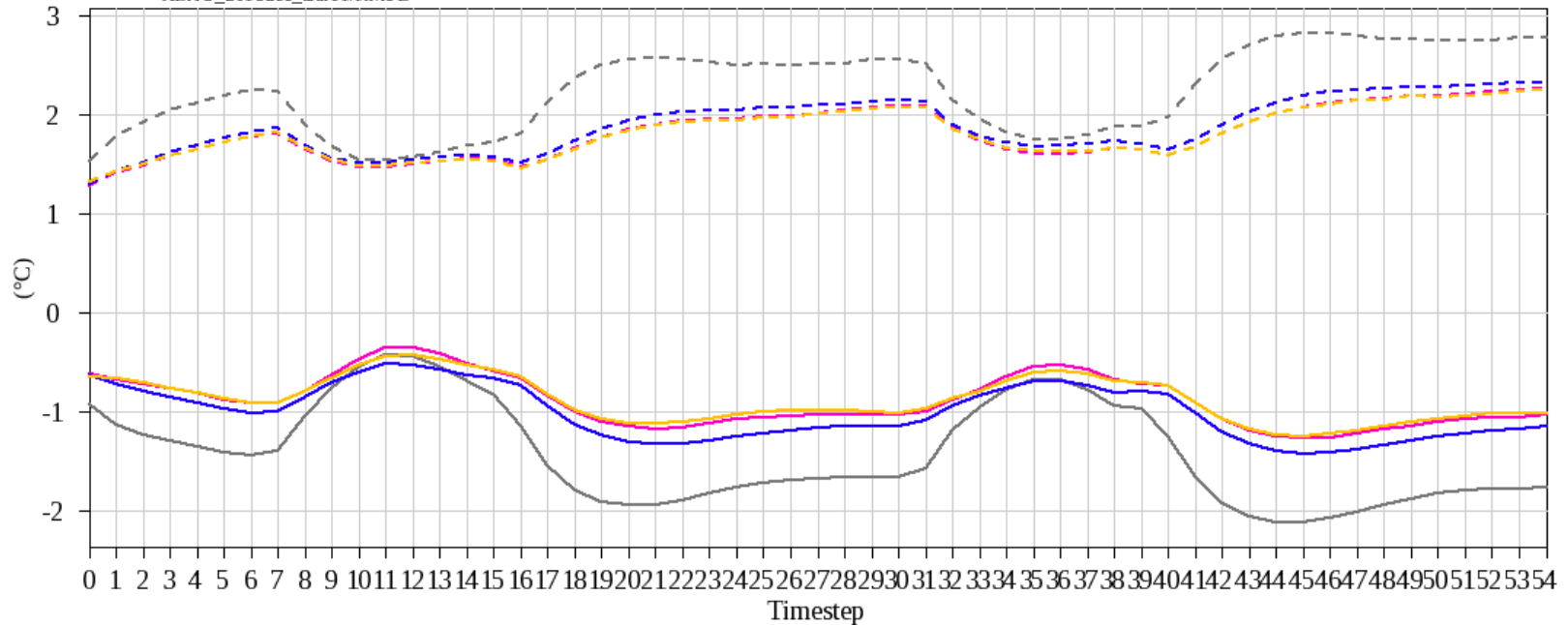
created by OVISYS with ploticus 2016.09.08.06:34:31

Dewpoint

Period: 12/02/2015 - 12/31/2015
 Area: HUN_ALL max 400m
 Variable: Dewpoint
 Runhour: 00

Legend (Model/Score)

- ALHU_2015dec_alaro1_hun_kull2/RMSE
- ALHU_2015dec_alaro1_hun_kull2/BIAS
- ALHU_2015dec_alaro1_kull2/RMSE
- ALHU_2015dec_alaro1_kull2/BIAS
- ALHU_2015dec_alaro1/RMSE
- ALHU_2015dec_alaro1/BIAS
- ALHU_2015dec_alaro1_orig/RMSE
- ALHU_2015dec_alaro1_orig/BIAS



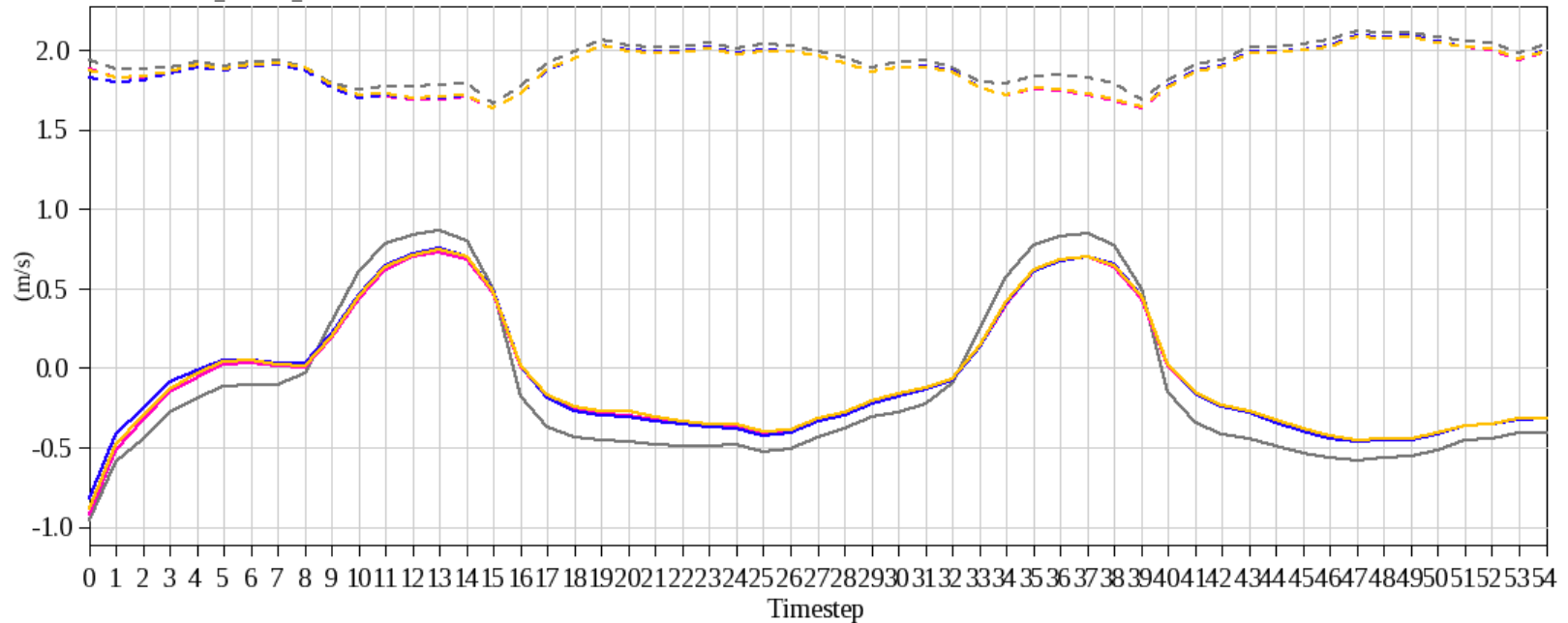
created by OVISYS with ploticus 2016.09.08.06:48:41

Wind gust

Period: 12/02/2015 - 12/31/2015
 Area: HUN_ALL max 400m
 Variable: Wind gust
 Runhour: 00

Legend (Model/Score)

- ALHU_2015dec_alaro1_hun_kull2/RMSE
- ALHU_2015dec_alaro1_hun_kull2/BIAS
- ALHU_2015dec_alaro1_kull2/RMSE
- ALHU_2015dec_alaro1_kull2/BIAS
- ALHU_2015dec_alaro1/RMSE
- ALHU_2015dec_alaro1/BIAS
- ALHU_2015dec_alaro1_orig/RMSE
- ALHU_2015dec_alaro1_orig/BIAS



created by OV1SY S with ploticus 2016.09.08.06:46:19

Further namelist modifications

- Wind gust values were too strong especially in low wind situations:
 - FACRAF=10 moderation (original: 12)
 - Positive bias is still existing but it originates from wind itself (not wind gust diagnostics)
- We modified some cloud diagnostics parameter (we have only 49 levels)
 - QXRTGH=3.5 (original: 1.6)
 - QXRAL=130. (original: 150.)
 - These modification was introduced under the really first ALARO version (before ALARO-0) and has not been revised since then.

THANK YOU FOR YOUR ATTENTION!

2m diagnostic

- Original Geleyn + Kullmann - currently used (alaro I_orig)

```
ZBN=VKARMN/SQRT(PCDN(JLON))
ZBNH=C3TKEFREE*VKARMN*SQRT(PCDNMR(JLON))/PCDNH(JLON)
ZBD=VKARMN/SQRT(PCD(JLON))
ZBH=C3TKEFREE*VKARMN*SQRT(PCDMR(JLON))/PCH(JLON)
ZBH=MIN(ZBH,ZBNH+ZSECU*ZAH)
ZRU=PDPHIV(JLON)/PDPHI(JLON)
ZRS=PDPHIT(JLON)/PDPHI(JLON)
ZLOGU=LOG(1.0_JPRB+ZRU*(EXP(ZBN)-1.0_JPRB))
ZLOGS=LOG(1.0_JPRB+ZRS*(EXP(ZBNH)-1.0_JPRB))
ZCORU=PSTAB(JLON)*ZRU*(ZBN-ZBD)+(1.0_JPRB-PSTAB(JLON))*LOG(1.0_JPRB+ZRU &
& *(EXP(MAX(0.0_JPRB,ZBN-ZBD))-1.0_JPRB))
ZCORSG=-ZRS*(ZBH-ZBNH)
ZCORSK=-ZAH*LOG(1.0_JPRB+ZRS*(EXP(MAX(0.0_JPRB,(ZBH-ZBNH)/ZAH))-1.0_JPRB))
ZWEIGHT=(MAX(ZDBHN,MIN(ZDBHX,ZBH-ZBNH))-ZDBHN)*ZIDZDBH
ZWEIGHT=(3.0_JPRB-2.0_JPRB*ZWEIGHT)*ZWEIGHT*ZWEIGHT
ZCORSI=ZWEIGHT*ZCORSG+(1.0_JPRB-ZWEIGHT)*ZCORSK
ZCORS=PSTAB(JLON)*ZCORSI+(1.0_JPRB-PSTAB(JLON))*LOG(1.0_JPRB+ZRS &
& *(EXP(MAX(0.0_JPRB,ZBNH-ZBH))-1.0_JPRB))
```

2m diagnostic

- New modset from LACE stay in Prague – Martin Dian, Ján Mašek (alaro I)

```

ZBN=VKARMN/SQRT(PCDN(JLON))
ZBNH=C3TKEFREE*VKARMN*SQRT(PCDNMR(JLON))/PCDNH(JLON)
ZBD=VKARMN/SQRT(PCD(JLON))
ZBH=C3TKEFREE*VKARMN*SQRT(PCDMR(JLON))/PCH(JLON)
ZRU=PDPHIV(JLON)/PDPHI(JLON)
ZRS=PDPHIT(JLON)/PDPHI(JLON)
ZLOGU=LOG(1.0_JPRB+ZRU*(EXP(ZBN)-1.0_JPRB))
ZLOGS=LOG(1.0_JPRB+ZRS*(EXP(ZBNH)-1.0_JPRB))
ZCORU=PSTAB(JLON)*ZRU*(ZBN-ZBD)+(1.0_JPRB-PSTAB(JLON))*LOG(1.0_JPRB+ZRU &
& *(EXP(MAX(0.0_JPRB,ZBN-ZBD))-1.0_JPRB))
ZDS=PCP(JLON,KLEV)*PT(JLON,KLEV)+PDPHI(JLON)-PCPS(JLON)*PTS(JLON)
ZGL=PCPS(JLON)*PTS(JLON)*PCD(JLON)*SQRT(PCD(JLON))* &
& (PU(JLON,KLEV)*PU(JLON,KLEV)+PV(JLON,KLEV)*PV(JLON,KLEV))/ &
& (VKARMN*PCH(JLON)*MAX(ZDS,ZEPS1)) ! g.L
ZGZ0H=PDPHI(JLON)/(EXP(ZBNH)-1._JPRB) ! g.z_0H
ZAUX=MAX(ZEPS2,PDPHI(JLON)*ACLS_HS/(ACLS_HS*ZGZ0H+ZGL))
ZCORSI=(ZBNH-ZBH)* &
& LOG(1._JPRB+ZAUX*PDPHIT(JLON)/PDPHI(JLON))/LOG(1._JPRB+ZAUX)
ZCORS=PSTAB(JLON)*ZCORSI+(1.0_JPRB-PSTAB(JLON))*LOG(1.0_JPRB+ZRS &
& *(EXP(MAX(0.0_JPRB,ZBNH-ZBH))-1.0_JPRB))

```

2m diagnostic

- Kullmann solution (alaro I_kull)

```
ZBN=VKARMN/SQRT(PCDN(JLON))
ZBNH=C3TKEFREE*VKARMN*SQRT(PCDNMR(JLON))/PCDNH(JLON)
ZBD=VKARMN/SQRT(PCD(JLON))
ZBH=C3TKEFREE*VKARMN*SQRT(PCDMR(JLON))/PCH(JLON)
ZBH=MIN(ZBH,ZBNH+ZSECU*ZAH)
ZRU=PDPHIV(JLON)/PDPHI(JLON)
ZRS=PDPHIT(JLON)/PDPHI(JLON)
ZLOGU=LOG(1.0_JPRB+ZRU*(EXP(ZBN)-1.0_JPRB))
ZLOGS=LOG(1.0_JPRB+ZRS*(EXP(ZBNH)-1.0_JPRB))
ZCORU=PSTAB(JLON)*ZRU*(ZBN-ZBD)+(1.0_JPRB-PSTAB(JLON))*LOG(1.0_JPRB+ZRU &
& *(EXP(MAX(0.0_JPRB,ZBN-ZBD))-1.0_JPRB))
ZCORSG=-ZRS*(ZBH-ZBNH)
ZCORSK=-ZAH*LOG(1.0_JPRB+ZRS*(EXP(MAX(0.0_JPRB,(ZBH-ZBNH)/ZAH))-1.0_JPRB))
ZCORSI=ZCORSK
ZCORS=ZCORU+ZCORSG+ZCORSK
ZCORS=PSTAB(JLON)*ZCORSI+(1.0_JPRB-PSTAB(JLON))*LOG(1.0_JPRB+ZRS &
& *(EXP(MAX(0.0_JPRB,ZBNH-ZBH))-1.0_JPRB))
```

2m diagnostic

- Upgraded Kullmann solution – Ri number dependent (alvaro I_kull2)

ZBN=VKARMN/SQRT(PCDN(JLON))

ZBNH=VKARMN*SQRT(PCDN(JLON))/PCDNH(JLON)

ZBD=VKARMN/SQRT(PCD(JLON))

ZBH=VKARMN*SQRT(PCD(JLON))/PCH(JLON)

ZRU=PDPHIV(JLON)/PDPHI(JLON)

ZRS=PDPHIT(JLON)/PDPHI(JLON)

ZLOGU=LOG(1.0_JPRB+ZRU*(EXP(ZBN)-1.0_JPRB))

ZLOGS=LOG(1.0_JPRB+ZRS*(EXP(ZBNH)-1.0_JPRB))

ZCORU=PSTAB(JLON)*ZRU*(ZBN-ZBD)+(1.0_JPRB-PSTAB(JLON))*LOG(1.0_JPRB+ZRU &
& *(EXP(MAX(0.0_JPRB,ZBN-ZBD))-1.0_JPRB))

ZCLSAH0=0.1_JPRB

ZCLSAHA=20.0_JPRB

ZCLSAHB=1.5_JPRB

ZEXPCRIT=20.0_JPRB

ZAH = ZCLSAHA*ABS(PRI(JLON))**ZCLSAHB+ABS(ZCLSAH0)

ZEXP=MAX(0.0_JPRB,(ZBH-ZBNH)/ZAH)

ZSECU=MAX(0.0_JPRB,SIGN(1.0_JPRB,ZEXP-ZEXPCRIT))

ZCORS=-PSTAB(JLON)*ZSECU*(ZAH*LOG(ZRS)+MAX(0.0_JPRB,ZBH-ZBNH)) &
& -PSTAB(JLON)*(1.0_JPRB-ZSECU)*ZAH*LOG(1.0_JPRB+ZRS*(EXP(MIN(ZEXP,ZEXPCRIT))-1.0_JPRB)) + &
& (1.0_JPRB-PSTAB(JLON))*LOG(1.0_JPRB+ZRS*(EXP(MAX(0.0_JPRB,ZBNH-ZBH))-1.0_JPRB))

2m diagnostic

- New modset from LACE stay in Prague – Martin Dian, Ján Mašek (alaroI)

$$\varphi_H(\xi) = 1 + \alpha \frac{\xi}{1 + \alpha\xi}$$

- Original Geleyn + Kullmann - currently used (alaroI_orig)

$$\varphi_H(\xi) = 1 + \alpha_G \xi$$

$$\varphi_H(\xi) = 1 + a_K \frac{\alpha_K \xi}{1 + \alpha_K \xi}$$

- Kullmann solution (alaroI_kull)

$$\varphi_H(\xi) = 1 + a_K \frac{\alpha_K \xi}{1 + \alpha_K \xi}$$

- Upgraded Kullmann solution – Ri number dependent (alaroI_kull2)

Too strong wind gusts - formulation

- The formulation of wind gust calculation was not modified in ALARO
- PCD (surface exchange coefficient) calculation has changed in this formula

$$\text{ZSCRAF} = 1 + \alpha \sqrt{\frac{C_D (U_N^2 + V_N^2)}{(U_{10m}^2 + V_{10m}^2) + (Z_{10m} \text{ GCISMIN})^2}} \sqrt{\frac{1}{1 + \left[\frac{\ln(1 + Z_{10m}/Z_{0,lim})}{\ln(1 + Z_{10m}/Z_0)} \right]^2}}$$

$$U_{raf} = \text{ZSCRAF } U_{10m}$$

$$V_{raf} = \text{ZSCRAF } V_{10m}$$

GCISMIN = 0.000067: minimum value of shear

$$\text{GZ0RAF} = gZ_{0,lim} = 10$$

$$\text{FACRAF} = \alpha = 15$$